



Housing LIN

Connecting people, ideas and resources

Housing Learning and Improvement Network (LIN)

TAPPI Phase 2: From Principles to Implementation

October 2022



@HousingLIN; @HLINComms; @HLINConsult

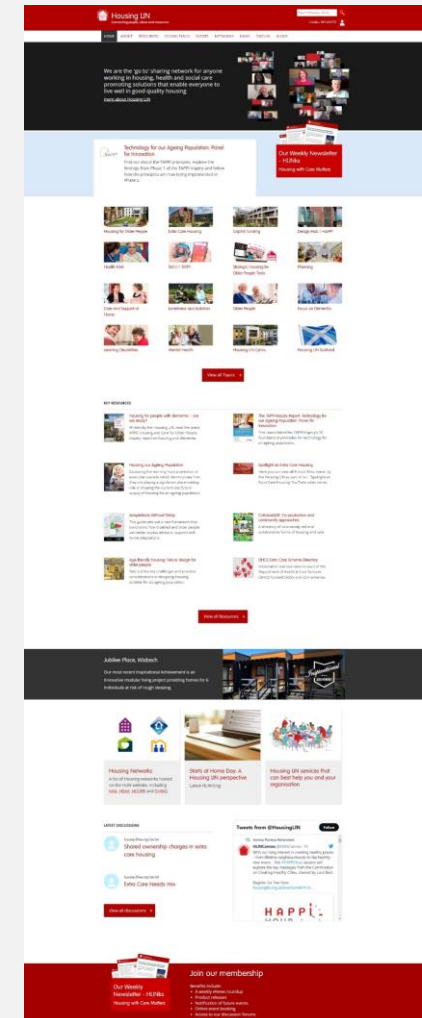
Housing LIN – Ideas Lab



Housing LIN

Connecting people, ideas and resources

- Our 'free to use' activities largely supported by a mix of crowdfunded & some consultancy work
- Sophisticated network bringing together housing, health and social care professionals in England, Wales and Scotland to exemplify innovative housing solutions for older and disabled people
- Recognised by government and the housing with care sector as a leading 'knowledge hub' on specialist housing and independent living
- Online HAPPI Hour webinars and networking
- We connect people, ideas and resources to inspire, inform and improve the range of contemporary housing choices that enable older and disabled people live independently



Who are we?



Housing LIN

Connecting people, ideas and resources



Jeremy Porteus - Chief Executive



Jerome Billeter - Corporate Business Manager



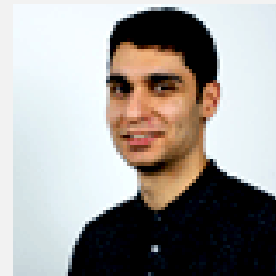
Ian Copeman – Business Director



Sally Taylor-Ridgway - Digital Comms, Marketing and Events Officer



Lois Beech - Senior Research Officer



Darius Ghadiali - Data Analyst & Knowledge Exchange Officer

Background to TAPPI



Housing LIN

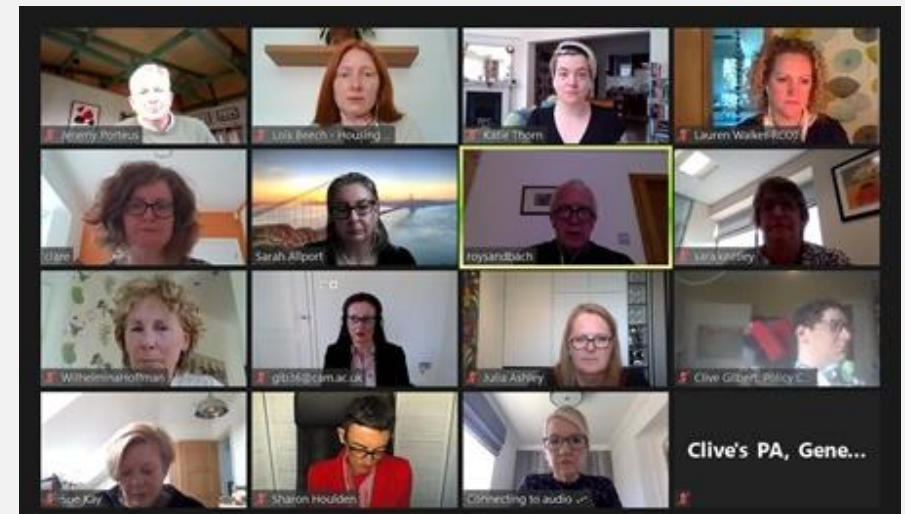
Connecting people, ideas and resources





The TAPPI Inquiry

- We formed a **TAPPI Panel** - key industry leaders and policy makers incl: TSA, DLUHC, LGA, ADASS and the Queen of Sweden's charity, Silviahemmet, chaired by Prof Roy Sandbach
- **TAPPI Inquiry Jan-Apr 2021** – 4 hearings, 4 regional sector regional events, call for info
- Linked with **3 other Commissions**
 - *Technology enabled care and support* (TSA/ADASS White Paper)
 - *Future of housing and care* (Social Care Institute for Excellence)
 - *Smart Homes and Independent Living Commission* (APPG on AT, Policy Connect)





Our role in TAPPI phase 2

- **Oversee the communication and dissemination strategy**
- **Facilitate and organise regular meetings of DMT and the delivery partners**
- **Provide secretariat support to organise Strategic Steering Board meetings**
- **Identify range of existing ‘tools’ and resources to support the delivery**
- **Oversee the 12-month transformation programme and provide regular reports to DMT and the Steering Board**





Housing LIN

Connecting people, ideas and resources

Thank you!



Housing LIN
C/o PRP, the Ideas Store
10 Lindsey Street, Clerkenwell
London EC1A 9HP

email: info@housinglin.org.uk
website: www.housinglin.org.uk

Twitter: @HousingLIN; @HLINComms; @HLINConsult

Governance

