



AMAR BARI AMAR JIBON NEWSLETTER

JANUARY - FEBRUARY 2025

PRESENTATIONS

Sheila, Moriom, and Mahera presented on 13th November at The Open University's FWELS Research Day on Partnership Working Through Co-Production. Our discussion focused on the ongoing efforts to uphold the core values of being Human, Inclusive, Transparent, and Challenging as we integrate co-production into all aspects of research.

By embedding the following tips, we continue to shape co-production as a meaningful and impactful practice:

Tip 1 : maintain being open to developing new ways of working; knowing in action

Tip 2 : Being reflexive and willing to move across roles, identities and boundaries

Tip 3: Starting early to allow time for relationship and trust building

Tip 4: Working with Emeritus academics

Tip 5: Being creative to make meaningful connections

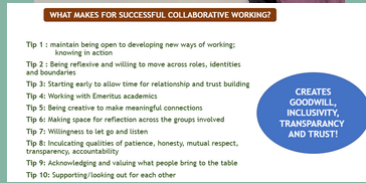
Tip 6: Making space for reflection across the groups involved

Tip 7: Willingness to let go and listen

Tip 8: Inculcating qualities of patience, honesty, mutual respect, transparency, accountability

Tip 9: Acknowledging and valuing what people bring to the table

Tip 10: Supporting/looking out for each other



PRESENTING INITIAL FINDINGS TO PAG

The Open University Team presented on 27th November initial findings from the first 39 Probin interviews to the Professional Advisory Group (PAG) members. The presentation provided an overview of participants' profiles, their experiences with housing, their health conditions, and their aspirations for future living arrangements. These early insights are helping shape our understanding of key challenges and priorities, guiding the next steps in our research.

We appreciate the engagement and feedback from the Advisory Group as we continue to build on these findings.

EXPLORING MULTIGENERATIONAL LIVING: INTERVIEW PHASE COMPLETED

ABAJ Co-Researchers Zakia, Lutfu, Amrin, Tabaruq, and Mahera have successfully completed interviews with eight multigenerational families. These families have been incredibly generous in sharing their time and experiences, offering valuable insights into the dynamics of living across generations.

The interviews were conducted in two parts, allowing for deeper conversations and reflections. With this phase now complete, our team of transcribers is diligently working on transcribing the discussions in preparation for the next stage: analysis.

A heartfelt thank you to the families for their openness and to the entire research team for their dedication!

NEXT... BRAG meeting on 25th January '25