

Care Services Improvement Partnership **HOUSING WITH CARE MATTERS**

Phil Hope - Minister of State for Social Care

Page Contents:

1	News
2	Policy News
2	Regulation & Inspection Update
2	Funding News
3	New Housing LIN Publications
4	Other Useful Publications
4	Calls for Information
5	Research Update
5	Regional LIN Meetings
5	National Events
5	Members' Section

Issue with live URLs and website links

NEWS: New Minister of State at the Department

In the recent Cabinet reshuffle Ivan Lewis departed for international development and we welcome Phil Hope MP as the new Minister of State for Social Care. The post has been upgraded from a Permanent Secretary to a Minister of State in recognition of the importance of social care.

For more information on the Minister see: www.philhope.org.uk

NEWS: Extra care scheme wins prestigious award

Rowan Village, Staffordshire Housing Association's extra care housing complex in Meir, has won a national housing award. It won the award in the 'meeting housing needs and aspirations' category at this month's 2008 UK Housing Awards.

Commissioned through the city's Extra Care Programme Board, Rowan Village meets the changing needs of older people by providing flexible care and support on-site for residents to use as, when, and if they need it. It also has apartments specially reserved for intermediate care use, and for older carers and their learning disabled dependants. As well as 75 apartments, the complex offers a variety of communal facilities including a hairdressing salon, restaurant, conservatory, lounge and gym.



Older people from across North Staffordshire joined a Friends of Rowan Village Group and influenced the name of the village and the kinds of facilities and activities the village should offer.

Jeremy Porteus, National Programme Lead for Housing at the Care Services Improvement Partnership within the Department of Health, paid tribute to the scheme, saying, 'Rowan Village is

(contd. on next page)

an excellent example of how extra care housing is providing real choice for older people with changing care needs but a real wish to live independently in high quality homes. With Staffordshire Housing Association and local government drawing on funding from the DH's Extra Care Housing Fund to build the scheme, it is also an excellent example of partnership in practice.'

For more information on the scheme see the Extra Care Locator on www.housingcare.org
Rowan Village: <http://tinyurl.com/6ejdbc>

POLICY NEWS

No One Left Out - Communities ending rough sleeping

Rough sleeping numbers have been driven down over the last decade and have stayed down due to concerted efforts across Government, the voluntary sector and community action. [This strategy](#) seeks to go even further and help end rough sleeping for good. It is a 15-point action plan which has been developed with leading



rough sleeping charities which will use action, advice and assistance across England to prevent the flow of people onto the streets, as well as to support those already there to get off the streets into stability. The plan calls on communities to get more involved in supporting those in their area at risk of rough sleeping, ensuring that the right resources reach the right people at the right time.

<http://www.communities.gov.uk/publications/housing/roughsleepingstrategy>

The Housing LIN will be producing a briefing on the strategy which will summarise the key points and highlight those aspects of particular relevance to the housing sector.

REGULATION & INSPECTION UPDATE

Care Quality Commission

The regulation of health and adult social care was carried out by the Commission for Healthcare, Audit

and Inspection (known as the Healthcare Commission) and the Commission for Social Care Inspection. The Mental Health Act Commission had monitoring functions with regard to the operation of the Mental Health Act 1983. New legislation replaces these three bodies and creates a single, integrated regulator for health and adult social care - the Care Quality Commission. This new body came into being in October 2008 and will be operational in April 2009.

Homes and Communities Agency

From 1 December 2008, the Housing Corporation will cease to exist. Its investment role, along with English Partnerships will be undertaken by the new Homes and Communities Agency (HCA). The HCA will be responsible for new affordable housing and regeneration. Other regulatory requirements, especially those relating to tenants, will be handed to a new sister agency, the Tenant Services Authority (see below). For further details on HCA, visit:

<http://www.communities.gov.uk/housing/strategiesandreviews/homesandcommunities/>

Tenant Services Authority

The TSA is the independent regulator for affordable housing in England established to drive up the standards of service for tenants. The TSA is committed to putting the consumer first, sharing information, and creating a standards framework to deliver excellence and challenge complacency.

For further details visit:

<http://www.communities.gov.uk/housing/strategiesandreviews/tenantservicesauthority/>

FUNDING NEWS

New money for handyperson services

The CLG have announced of a Minor Repair and Adaptation grant allocation to local authorities for 2009/10 and 2010/2011. The accompanying letter sets out the amount each LA will receive. Additionally expressions of interest are also invited for a more limited distribution of grant allocations for 2009/10 and 2010/11 for an Enhanced Services Programme such as energy efficiency or hospital discharge work for approximately 10-20 Local Authorities. For more information visit: <http://www.spkweb.org.uk/>

Full Story: <http://tinyurl.com/6ae9zz>

Telecare and charging

[The latest Telecare eNewsletter](#) from CSIP Networks reviews the importance of Putting People First in providing telecare services. Over 300 services across England have now been mapped as users and carers consider how they make the best use of social care personal budgets. It is important that people using telecare services know about the cost of the service. A recent charging survey highlights the wide variation in charges across the country. The latest newsletter (October 2008) provides links to the map, charging survey and a supplier supplement. http://networks.csip.org.uk/nl/?l=336_1_1_3

NEW HOUSING LIN PUBLICATIONS

New Report

Putting Older People First in the South West

[A new report](#) and accompanying resource pack from the Housing LIN and the Housing Corporation looks at the future accommodation needs of older people in the South West of England and provides a series of case studies to illustrate approaches to addressing these needs.

<http://networks.csip.org.uk/IndependentLivingChoices/Housing/Topics/type/resource/?cid=4775>

New Briefings

Understanding homelessness and mental health

[This briefing](#) is a joint publication between Communities and Local Government and the Housing Learning and Improvement Network

It is for providers of mental health services and health and social care commissioners. It describes some of the difficulties faced when people who are homeless are in contact with mental health services and some of the ways of ensuring appropriate care and support is given.

<http://networks.csip.org.uk/IndependentLivingChoices/Housing/Topics/browse/Homelessness/?parent=980&child=2667>

Transforming the Delivery of Services

[This briefing](#) explains the new landscape of Area Based Grants, RIEPs, LAAs, CAAs, LSPs, JIPs, JSNAs and the personalisation agenda. It sets out how they work, and their relevance for housing, care and support. These terms are linked in a strategic agenda to change the way Local Authorities, their partners and providers think about and deliver public services for vulnerable people in need of care and /

or support. The briefing is for those people working across health, housing and care who need to know something about why and how their world is changing. It will give the reader a sense of the big picture of the Government's agenda. <http://networks.csip.org.uk/IndependentLivingChoices/Housing/Topics/type/resource/?cid=4773>

In addition, the CLG's [local priorities website](#) lists the national indicators included in each local area agreement in England. You can search by region and local area, and view a list of targeted and statutory priorities. The website also provides an overview of local priorities and further information on each indicator.

<http://www.localpriorities.communities.gov.uk/>

Health inequalities: Progress and Next Steps

[This briefing](#) provides an overview of the recent Health England report from the Department of Health, *Health Inequalities: Progress and Next Steps*, on progress on the government's efforts to tackle health inequalities. It also makes the connection with housing and health to promote health and wellbeing. See under Latest Resources at

<http://networks.csip.org.uk/IndependentLivingChoices/Housing/Topics/>

New Case Study

Block contracting care in bands and individual budgets

[This case study](#) evaluates the use of five bands to manage the delivery of care at Reeve Court Retirement Village in St Helen's Council. These bands are defined by level and complexity of need. Whilst the number of people in each band changes from time to time, the annual amount paid to the Trust remains the same.

The case study:

- describes the model
- explores its advantages and disadvantages
- considers whether it provides value for money to stakeholders
- explores some of the implications of individual budgets for this approach

The case study is extracted from a wider evaluation of the village which set out to answer specific questions, related to: health and well-being outcomes; the way in which care and housing-related support are commissioned and delivered; the range and level of needs met at the village; community mix; value for money; and the effectiveness of processes at the village. The evaluation concludes that a holistic, person-centred ethos and approach to

service delivery is beneficial to residents' health and well-being, and that the way in which the care is commissioned contributes to this effect.

<http://networks.csip.org.uk/IndependentLivingChoices/Housing/Topics/browse/HousingExtraCare/Evaluation/?parent=3664&child=4769>

OTHER USEFUL PUBLICATIONS

Individual Budgets – DH response to evaluation

The evaluation of the 2 year Individual Budget (IB) programme was published last month. The evaluation found that IBs were broadly welcomed by users and gave them more control over their lives. The report and the DH's response are now available at:

www.dh.gov.uk/en/Publicationsandstatistics/Publications/PublicationsPolicyandGuidance/DH_089505

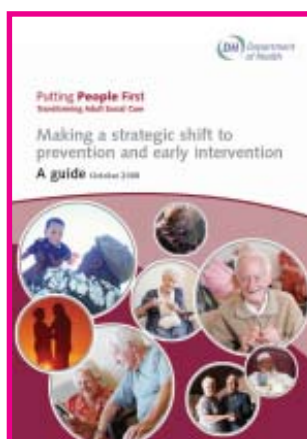
Putting People First – the whole story

The DH have issued a useful leaflet outlining key messages from Putting People First. Available at:

www.dh.gov.uk/en/Publicationsandstatistics/Publications/PublicationsPolicyandGuidance/DH_089665

POPPS – making a strategic shift

[This new guidance](#) builds on the lessons that have emerged from the Partnership for Older People Projects. It sets out a comprehensive framework to support local authorities and health communities move towards prevention and early intervention. Available at:



[http://networks.csip.org.uk/library/Resources/Prevention/CSIP_Product/MSS - Guide.pdf](http://networks.csip.org.uk/library/Resources/Prevention/CSIP_Product/MSS-Guide.pdf)

Older people – a common currency

'The need for a common language to describe older people's housing', published by the Housing Corporation. This is the final paper from the Towards a Common Currency project. The paper looks at moving towards a common language to accurately describe older people's housing.

http://www.housingcorp.gov.uk/upload/pdf/In_brief_Common_Language_20080926134556.pdf

Costs and outcomes of Extra Care

[This new 'Findings' report](#) from the Joseph Rowntree Foundation looks at the costs and benefits of a Methodist Homes Extra Care Housing scheme in Bradford. Undertaken by the PSSRU it concluded that while the costs of care and support was higher than local alternatives, there were better care outcomes and significant improvements in residents' health and wellbeing, compared to their experiences in previous homes. Further details at:

<http://www.jrf.org.uk/knowledge/findings/socialcare/2277.asp>

End of Life Care – Is it that time already?

[A new report](#) into the end of life care for older people in extra care housing is calling for more support for staff and improved cross sector working to help promote dignity and choice for older people (and their families) as they near the end of their lives. Available from www.housing21.co.uk or the National End of Life Care programme

www.endoflifecareforadults.nhs.uk

CALLS FOR INFORMATION

Carers and Housing – info for new factsheet

We are working with the Princess Royal Trust for Carers on producing a new factsheet on carers and housing. We are interested in receiving examples of practice, policies and/or procedures on carers/volunteering in a housing with care and support setting. Please email information to Yvonne.maxwell@dh.gsi.gov.uk.

End of Life Care – info for new factsheet

Karen Croucher, Research Fellow at the Centre for Housing Policy at the University of York will be updating the Housing LIN factsheet on end of life care in housing with care settings. She will be looking at the new End of Life Care Strategy and the findings of some recently published research (see useful publications section). However, she is very keen to draw on practitioners' experiences and concerns, and to include practice examples and - if possible - some case studies in the new factsheet.

Karen would be interesting in hearing from any housing and care providers who would like to talk about their experiences of end of life care. She can be contacted on 01904 321480, or by email at: klc1@york.ac.uk.

No Secrets – safeguarding vulnerable adults

The Consultation on the Review of the *No Secrets* Guidance was launched on 13 October 2008, and asks the following questions about the safeguarding of vulnerable adults, in relation to housing and housing related support services:

Q7a. Do we need stronger policy links between safeguarding and community

development and empowerment? How can this be achieved at the national and the local levels?

Q7b. How can housing providers contribute to safeguarding? What could housing departments, housing associations and supported housing/living providers do to enable their tenants and residents to live safer lives?

The No Secrets review team would welcome your contributions to the consultation, which closes on 31 January 2009.

Please send consultation responses by email to: nosecretsreview@dh.gsi.gov.uk or by post to:

Lucy Bonnerjea, Department of Health, Wellington House, 133 Waterloo Road, London SE1 8UG

Reviewing Supporting People

The Audit Commission is inviting views on the impact and outcomes of the Supporting People programme to inform their review of the programme. They would like to consider the following issues:

- What has worked well?
- What needs to be changed?
- What opportunities are there for the future?
- What concerns do you have for the future?
- What evidence do you have to support your views?

Please give examples including case studies where possible and submit your views to d-pilgrim@audit-commission.gov.uk or write to Supporting People Review, Housing Inspectorate, Audit Commission, 1st Floor, Millbank Tower, Millbank, London SW1P 4HQ

RESEARCH UPDATE**Extra Care Housing – DH evaluation update**

Last month, the PSSRU at the University of Kent held a feedback day on the evaluation of the DH's 2004-2006 funded extra care housing schemes. Presentations from the day are now available at www.pssru.ac.uk/events/ech2008.htm

REGIONAL LIN MEETINGS

The regional LIN leads have regular meetings to review current and forthcoming policy, research and events that will be of interest to members and to ensure we keep improving regional meetings.

Our regular regional meetings are:

London & South East Region Housing LIN
4th December, Newbury

West Midlands Region Housing LIN
22nd January 2009, location tbc

North East Region Housing LIN
29th January 2009 provisional date, Castleford

NATIONAL EVENTS

Housing, Care and Support Conference, 27/28 January – Manchester

<http://www.pavpub.com/pavpub/conferences/showfull.asp?Conference=777>

Housing Conference, Guardian Newspaper, 29 January – London

<http://www.guardian.co.uk/futurehousing>

MEMBERS' SECTION**Sensory loss and support**

A new guide to enable older people with sensory loss to get the support and help they need was launched by Counsel and Care on 28th October 2008

Contact: Anna Passingham 020 7241 8523

Hawthorns Community Resource Centre open for business

A new, 21st century standard Community Resource Centre at the Hawthorns, Keynsham for older people and persons with a disability is now open for business. The Centre is the third and final project which is part of Bath and North East Somerset Council's £28.8 million redevelopment of care facilities. It will provide a 30 bed residential care home, a 30 flat extra care facility, and Day Centre. For more information contact: Harriet Bosnell, Head of Supported Housing:

harriet_bosnell@somer.org.uk

Regional Strategic Framework for Housing Support Services

4NW is the Regional Leaders Forum for England's Northwest and is also the Regional Housing Board for the Northwest. They have developed a Regional Strategic Framework for Housing Support services. The main focus of work has been the **North West Needs Assessment Model**.

- Establish a baseline of current support across region
- Assess future need through projection modelling
- Identify factors that might impact on the level of provision
- Identify opportunities for influencing the amount of supported housing in the region
- Make projections based on both individual client groups and 3 "super-groups" of vulnerable people (older people, support with care and the socially excluded)

For more information contact: Martin Morton Supported Housing & Homelessness Coordinator, 4NW, Wigan Investment Centre, Waterside Drive Wigan, WN3 5BA, 01942 776940 www.4nw.org.uk

A few CD-Roms and DVDs still available free from housing@csip.org.uk

- That's My Home – Housing Needs for Older People with Dementia (CD Rom)
- Telecare – Living with Independence (CD Rom)
- Healthy Homes, Healthier Lives (DVD / CD Rom and support material)
- Strategic Moves – Thinking, planning and delivering differently - Strategic Commissioning of Services for Older People (CD Rom)
- Housing Now - Choice, control and independence for people with learning difficulties (DVD and CD Rom pack)



PROMOTE YOUR WORK

If you have promotional material, articles or features you would like us to include in future editions of *Housing with Care Matters*, please send details to housing@csip.org.uk

We welcome your contributions

The next issue will be in Nov/Dec 2008

For further information, contact the **Housing Learning & Improvement Network**

tel: 020 7972 1330

or email: housing@csip.org.uk

or write to Housing LIN, CSIP Networks,
Wellington House,

133-155 Waterloo Road, London SE1 8UG