

Telecare LIN eNewsletter February 2010

Welcome to the February 2010 newsletter. The Telecare Learning and Improvement Network (LIN) is responsible for providing general implementation support to organisations building their telecare and telehealth programmes in England.

Registered DH Care Networks telecare membership is now over 5800 (an increase of 2300 since July 2008). The newsletter also goes out to the Housing Network (5100 contacts).

All telecare newsletters are archived at:
www.dhcarenetworks.org.uk/telecarenewsletters

If you are an organisation implementing telecare or telehealth in England and have an interesting local telecare or telehealth story for inclusion in a future newsletter then e-mail Mike Clark at telecare@dhcarenetworks.org.uk

If you would like up to date information about the Whole System Demonstrator Programme and the development of the evidence base for telecare and telehealth then go to www.wsdactionnetwork.org.uk

There is free registration on both web sites.

Contents

Item	Page
1 Buying Solutions Assistive Technologies - Telecare/Telehealth/Telecoaching Solutions re-procurement	3
2 Whole System Demonstrator Action Network – Stansted event (11 February 2010)	3
3 Information request – Telecare and Telehealth Briefing Papers	7
4 Telecare in the headlines	8
5 Personal Care at Home Bill – House of Lords	11
6 DH publications	13
7 Audit Commission – Under Pressure – tackling the financial challenges of an ageing population	17
8 News and links	18
9 Events	45

Headlines for February 2010

Item 1 provides a link to the advertisement placed by Buying Solutions for the reprocurement of Telecare/Telehealth/Telecoaching Solutions. Instructions on how to submit a bid are documented in the OJEU (Official Journal of the European Union) notice along with the closing date for return.

Item 2 provides a summary on a recent conference in Stansted, Essex with the latest from the Whole system Demonstrator Programme. More detailed reports will be available at www.wsdactionnetwork.org.uk in March 2010. Presentation slides are now available.

Item 3 is an information request. A series of briefing papers are being prepared as part of the Whole System Demonstrator Programme. This includes major reviews of the evidence/evaluations and papers on commissioning, innovation etc. The deadline for submissions is 31 March 2010.

Item 4 rounds up some of the recent telecare headlines as local authorities agree their 2010/2011 budgets and make longer term investment decisions on telecare. There is also a message from a recent Coroner's report about monitoring and response arrangements.

Item 5 provides references to the Personal Care at Home Bill that is currently in the House of Lords.

Item 6 includes a number of important recent DH publications including social care eligibility arrangements (applies from April 2010) and a consultation on a COPD strategy. Some of these documents include telecare or telehealth references.

Item 7 refers to a recent Audit Commission Report 'Under Pressure – tackling the financial challenges of an ageing population'. There are telecare references in the document. In addition, there are references to other important publications (eg CBI report) referring to telecare or telehealth in Item 8.

Item 8 is a comprehensive round up of news and links from around the world of particular interest to organisations implementing telecare and telehealth

Note: DH Care Networks is not responsible for the content of external links and does not endorse any suppliers or their products. Any claims made by organisations should be carefully evaluated as part of normal commissioning and procurement arrangements.

1 Buying Solutions Assistive Technologies - Telecare/Telehealth/Telecoaching Solutions re-procurement

The OJEU notice for the procurement has been published and can be viewed using the following link:

<http://ted.europa.eu/udl?uri=TED:NOTICE:57217-2010:TEXT:EN:HTML>

OJEU ref: 2010/S 39-057217

Instructions on how to submit a bid are documented in the OJEU notice along with the closing date for return.

Buying Solutions Customer Service Desk - 0345 410 2222

Web site: www.buyingsolutions.gov.uk

2 Whole System Demonstrator Action Network – Stansted event (11 February 2010)

Prepared by Mike Clark



The Stansted event was opened by **Richard Giordano** from The King's Fund.

Tim Ellis (WSD Programme Manager) provided an update on the Whole System Demonstrator Programme and answered some of the frequently asked questions.

The WSD programme will continue through 2010 as each participant in the intervention and control groups will be followed up at 12 months.

Presentation slides from the event are now available and reports will be on the WSDAN web site in March.



Professor Jane Gilliard presented on 'Telecare and Ethics' to an audience of 85 people from health, local authorities, housing associations, suppliers, academics and third sector organisations together with regional representatives.

She highlighted some of the findings of a recent 'Bridging the Gap' workshop in London. Telecare is featured within Objective 10 of the National Dementia Strategy.



Professor Stanton Newman revisited his previous presentation at Manchester on the hierarchy of evidence.

He introduced his colleague, **Anna Davies** (also from University College London) who summarised some of the important aspects of evaluation quality and reviewed a recent paper by TS Bergmo entitled "Can economic evaluation in telemedicine be trusted? A systematic review of the literature" (<http://www.resource-allocation.com/content/7/1/18>).

In addition, Anna also reviewed an unpublished thesis on a social care study covering the impact on caregivers ('The effect of home-monitoring technology on reducing burden in caregivers of older adults with disabilities', L. Russ 2006).

Unit of Behavioural Medicine
UCL Division of Research Strategy

UCL

A review of economic evaluations

- *Can economic evaluations in telemedicine be trusted?* (Bergmo, 2009)
 - What is the quality of the evidence provided in economic evaluations of telemedicine?
 - Systematic review of telemedicine interventions
 - Telemedicine: real time and store and forward data transfer (e.g. videoconferencing, xrays, glucose monitoring)
 - **Costs and non-resource related outcomes** (including non-cost related e.g. quality of life, depression, HbA1c)

Anna's take home messages around evaluation were:

- Avoid taking evaluation findings at face value
 - evaluate primary studies
 - checklists are a useful tool for doing this
- Review findings are only as good as the studies that go into it

Unit of Behavioural Medicine
UCL Division of Research Strategy

UCL

Other aspects of evaluation quality

1. Clear objectives and questions
2. Clear statement of methods used to answer them
 - Study design, comparison groups guided by questions
3. Sampling
 - Representative: do people evaluated represent those that will eventually receive TC or TH?
 - A sufficiently large sample- power to detect an effect

Unit of Behavioural Medicine
UCL Division of Research Strategy

UCL

Other aspects of evaluation quality

4. Measures used
 - comprehensive, valid and reliable - established measures
5. Confounding variables identified and controlled for
 - Factors other than intervention that may account for findings
6. Appropriate analyses to answer the questions
7. Appropriate conclusions, generalisability and feasibility of findings
(See NICE CPHE manual, or CASP for further quality criteria)

The WSDAN website provides updated reports on the WSD Programme. The site also maintains the evidence database. Professor Newman, Anna Davies and their colleagues at University College, London are carrying out major reviews of the literature.

If you are carrying out an evaluation let Mike Clark know at telecare@dhcarenetworks.org.uk as we are updating our database ready for publication. If you are using similar survey tools/instruments in your evaluation, it may be possible to link to the WSD control Group.

[Register](#) now for regular WSDAN updates (www.wsdactionnetwork.org.uk)



Outline of the telecare project; main findings

Pre installation

Issues	Solutions
Knowledge of telecare among needs assessors	Training and information, especially in the context of personalisation.
Informed consent	See MCA for advice on clearly presented information and ascertaining capacity.
Correct use of telecare	Interfaces allowing direct communication between user and monitoring centre.
Stress free installation	Training; negotiation; work closely with families.

social care institute for excellence

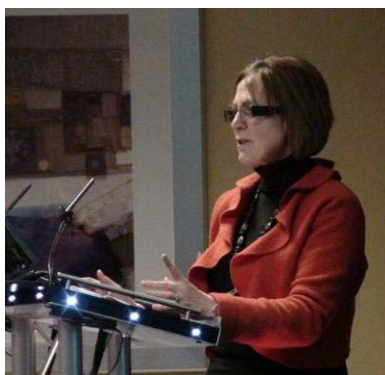
Outline of the telecare project; main findings

Post installation

Issues	Solutions
Privacy	Clear agreements over how information is used, stored and shared.
Social isolation	Telecare to complement traditional support and not replace human contact.
Appropriate telecare choices	Support & information for self purchasers/ personal budget holders.
Equity in accessing telecare	Greater flexibility in the means of communication used by telecare.

social care institute for excellence

David Ellis and **Jennifer Francis** from SCIE trailed the forthcoming publication on ‘telecare and ethics’ in a breakout session and obtained some early feedback on the preparation of a telehealth report. In additional breakout sessions, **Michael Dillon** with support from Philips and EMIS carried out a demonstration on capturing telehealth data in the GP’s electronic care record and **Rob Chesters** presented some of the work being carried out in the West Midlands on telecare, telehealth and partnership working with stakeholders.




Representing NHS Norfolk and Norfolk County Council, **Wendy Hardicker** covered the extensive work in the county on telecare, telehealth and integrated working. **Heather Ballard** from the strategic health authority placed telecare and telehealth in the context of providing support and services for people with long term conditions.



What we have achieved so far

- 25,000 homes linked to Community Alarm systems
- In 2008, 4,000 homes were assessed and people supported with stand alone Telecare solutions
- Development of an integrated model of assessment, installation and monitoring (NHSN/NCC)
- Integrated governance and standard documentation frameworks
- Increase of the number of Telehealth monitors deployed to support COPH/CHD
- Engagement with PbC consortia to develop business plans to reduce the impact of COPD and CHD using Telehealth
- Support for practices to improve healthcare access through technology installations in non-traditional environments



What we have achieved so far cont...

- Ongoing deployment of multi-user monitors into care homes
- Working as part of a countywide multi-agency falls group
- Involved with relocation of LD service users from NHS Campuses to supported living in the community
- Providing support to residential and Housing with Care schemes
- Working with Acute Trusts to reduce falls in hospital wards
- Forming the cornerstone of Prevention Services within Adult Social Services / NHS Norfolk

Presentation slides are now available at:

http://www.wsactionnetwork.org.uk/past_events/index.html

3 Information request – Telecare and Telehealth Briefing Papers

Prepared by Mike Clark

Nick Goodwin and I (Mike Clark) are currently working on a number of briefing papers as part of the Whole System Demonstrator Action Network in England (www.wsactionnetwork.org.uk).

The Network is responsible for disseminating the learning from the Whole System Demonstrator Programme (WSD) in Kent, Cornwall and Newham. The WSD programme is thought to be the largest randomised controlled trial of telecare and telehealth ever undertaken within an integrated health and social care setting.

The briefing papers will be published over the coming months as part of the developing evidence base and will include major reviews of the literature. This work is being completed in conjunction with the WSD evaluation team.

The briefing papers will include examples of innovation and good practice as well as case studies from the programme and from around the world.

We recently issued an information request covering quantitative studies around carers and telecare/telehealth and have been very pleased with the response.

We are now looking for documented examples of product and service innovation (including how barriers and challenges have been overcome), service commissioning, integrated and partnership working, interoperability, business and strategic planning for working at scale as well as the involvement of users and patients in the design of products and services.

We are particularly interested in examples where there has been an independent evaluation of a programme as we are updating our national project and evaluation listings for future publication. If you have an audit or independent evaluation either completed or underway, we would be very interested to hear from you.

If you are able to respond to this information request then please send your contributions to Mike Clark at telecare@dhcarenetworks.org.uk. We look forward to hearing from you by **31 March 2010**.

A special thank you to everyone that has already been in touch with updated information.

If you would like to keep up to date with the WSD programme or use the evidence database then register at www.wsdactionnetwork.org.uk

4 Telecare in the headlines

Prepared by Mike Clark

Local authorities are finalising their 2010/2011 budgets and there are some interesting telecare developments. There is also a sombre note where a local Coroner has identified the importance of high quality monitoring and response services.

a) Newcastle pilots free Telecare for the over 85s

Peace of mind at the touch of a button - Newcastle pilots free Telecare for the over 85s

<http://www.24dash.com/news/Housing/2010-02-04-Peace-of-mind-at-the-touch-of-a-button-Newcastle-pilots-free-Telecare-for-the-over-85s>

b) Care Minister's visit to Harrogate to see telecare

Innovative Technology Would Drive Personalised Care Services In Britain Says Minister

<http://www.egovmonitor.com/node/33309>

Care services minister visits Harrogate to see telecare systems at work

<http://www.publictechnology.net/modules.php?op=modload&name=News&file=article&sid=22528>

Top class telecare in Harrogate

<http://www.northyorks.gov.uk/index.aspx?articleid=11811>

Telecare is key to supporting independence, says Minister

<http://tunstall-telehealthcare.blogspot.com/2010/02/telecare-is-key-to-supporting.html>

Phil Hope MP Visits Harrogate to See Innovative Telecare Systems At Work Care Services Minister visits North Yorkshire to see how telecare systems are helping users

http://www.it-director.com/enterprise/public_sector/news_release.php?rel=15717

Good Practice: How elderly people in North Yorkshire have been helped by telecare/assistive technology - North Yorks makes good use of preventative technology grant

<http://www.communitycare.co.uk/Articles/2010/02/25/113902/good-practice-north-yorkshire-telecareassistive-technology.htm>

c) Innovative adult social care services - Brighton

"Brighton & Hove is pioneering new Telecare services which improve older people's lives and enable them to live independently for as long as possible. By exploiting new technology we can keep costs down whilst still delivering first class vital services to vulnerable residents and peace of mind for relatives and carers.

"We provide Telecare services to 5,000 users and currently we handle around 500 alarm calls per day.

"These include bed and chair occupancy detectors that, for example would set off an alarm if a client leaves their bed at night and does not return within a set amount of time. This is useful for people who are prone to falls. These could also be linked to a light that would automatically switch on when they leave their bed. Other services raise alerts if a door is left open, a person leaves the property or there is a flood."

<http://www.brighton-hove.gov.uk/index.cfm?request=c1221034>

d) County and PCT collaborate on telecare deal (West Sussex)

The county council and primary care trust for West Sussex have joined forces in awarding a contract for telecare services. The two organisations have signed a £2.35m deal with Wealden and Eastbourne Lifeline under which staff from both will be able to make referrals.

The service will be available across West Sussex, and will include the provision of fall detectors, movement devices able to check if someone getting up from bed at night returns within a set period, medication dispensing reminders and devices able to check that the likes of gas and water taps are turned off. Initially, it is likely to provide equipment and services to hundreds of clients, rising to thousands in the future.

Link: <http://www.smarthealthcare.com/west-sussex-telecare-pct-county-council-22feb10>

e) Bradford – Intended spending includes £350,000 on telecare

Link:

http://www.thetelegraphandargus.co.uk/news/5029871.Council_tax_rise_will_average_14/?ref=rss

f) Wirral investment in assistive technology

"There will also be an £8.9m investment over three years in assistive technology for the elderly and vulnerable, using the latest sophisticated telecare monitoring and alarm systems".

Link:

http://www.wirralglobe.co.uk/news/5023081.Wirral_s_council_tax_to_rise_by_1_67_percent/

g) Surrey launches £50,000 telecare initiative for people with dementia

Link:

http://www.24dash.com/news/Local_Government/2010-02-25-Surrey-launches-50-000-telecare-initiative-for-people-with-dementia

h) North East Lincs telecare investment

Link:

<http://www.thisisgrimsby.co.uk/news/budget-best/article-1851706-detail/article.html>

Nottingham marks Dignity in Action Day



<http://www.nottinghamcity.gov.uk/index.aspx?articleid=9164>

Care complex to get £8.5m replacement (Burton)

"..It will also be wired up to high-tech computer and scanner systems to offer the latest in 'Telecare', which can sense risks such as smoke, floods and gas, remind occupants to take pills and call for help if they fall...."

<http://www.burtonmail.co.uk/burtonmail-news/DisplayArticle.asp?ID=483747>

Ed Miliband MP Visits Tunstall Response Centre

<http://tunstall-telehealthcare.blogspot.com/2010/02/ed-miliband-mp-visits-tunstall-response.html>

North Wales fire and Rescue Service called to Mold kitchen fire

<http://www.flintshirechronicle.co.uk/flintshire-news/local-flintshire-news/2010/02/18/north-wales-fire-and-rescue-service-called-to-mold-kitchen-fire-51352-25855567/>

Coroner's report

"...he (the coroner) criticised the city council after it was revealed the call centre was run manually, with calls recorded on a clipboard after arriving on the call handlers' computer screens.

"I was unimpressed by some of the systems that were in operation at the time of Mrs Marshland's death in February 2008.

"Some were not as robust as they ought to have been and to that end may have exposed service users to risks including death."

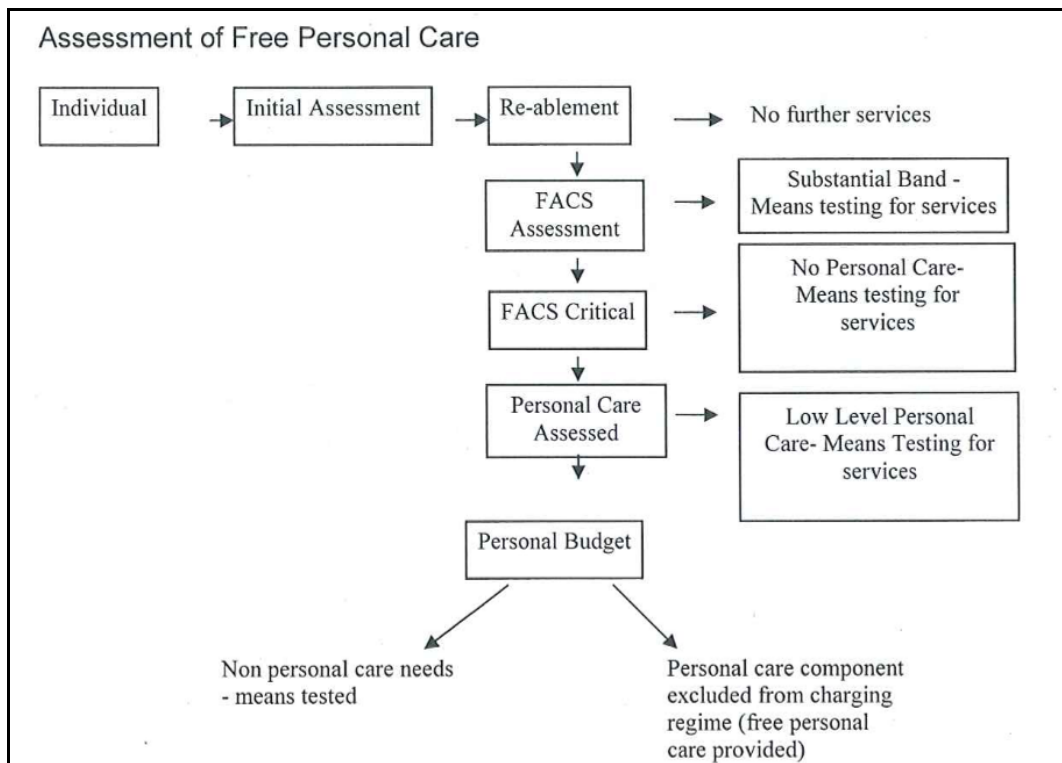
He also recommended the city council share the lessons it had learnt with other telecare services..."

<http://www.sunderlandecho.com/news/Coroner-criticises-Sunderland-Council-call.6110269.jp>

5 Personal Care at Home Bill – House of Lords

On 22 February 2010, the Personal Care at Home Bill was debated further in the House of Lords at the Committee Stage. A number of amendments were considered.

It is anticipated that, subject to the passage of the Bill and the introduction of regulations, free personal care at home for those with the highest needs would be introduced from 1 October 2010. In the first half year, £210m will be made available from central resources and the remainder of the funding - £125m – will be found from local government efficiency savings. £670m will be available in the first full year of operation, made up of £420m central funding and £250m in local government efficiency savings.



Free personal care for people with critical needs could impact on how telecare is currently provided by local authorities.

It is envisaged that local authorities could make free personal care conditional on a period of reablement (except for some excluded cases such as end of life care). This reablement offer would be outside of the formal Community Care Assessment (see flowchart).

Definitions of 'personal care', 'activities of daily living', 'reablement' etc are being considered within regulations/guidance. Further detailed arrangements would have to be set out at a local level. (There is currently a consultation on the draft regulations/guidance).

An individual refusal to take up the offer of a reablement programme could affect the provision of free personal care.

Telecare could be part of such a reablement programme and could offer specific short term diagnosis/assessment options as well as sensor-based packages and other monitoring programmes for the longer term if appropriate.

Once the reablement period is complete, the continuing availability of telecare would depend on an assessed care package (means-tested within a personal budget) or self-funding.

Telecare could, of course, be provided within a package/personal budget for any provided FACS level of service or as part of a prevention programme. The longer term charging arrangements would need to be determined.

The formal DH impact assessment does not specifically consider the costs of providing a telecare package within reablement and calculations are made on the basis of £1000 total per package.

The overall funding of free personal care at home is covered by the impact assessment and would currently be achieved through an additional amount from the Department of Health (£420m) and local authority efficiency savings (£250m) in the first full year.

The next stage of the Bill will be in the House of Lords on 8 March 2010.

The Bill:

<http://www.publications.parliament.uk/pa/ld200910/ldbills/023/10023.i-i.html>

Progress on the Bill:

<http://services.parliament.uk/bills/2009-10/personalcareathome.html>

House of Lords Debate (2nd Reading on 1 February 2010):

<http://www.theyworkforyou.com/lords/?id=2010-02-01a.12.7>

<http://www.theyworkforyou.com/lords/?id=2010-02-01a.37.2>

Personal care at home: a consultation on proposals for regulations and guidance

http://www.dh.gov.uk/en/Consultations/Liveconsultations/DH_109139

House of Lords (Committee Stage n 22 February 2010)

Section 1

Link: <http://www.theyworkforyou.com/lords/?id=2010-02-22a.817.14> – no references to telecare on this page

Section 2

Link: <http://www.theyworkforyou.com/lords/?id=2010-02-22a.833.1>

References:

Lord Tunncliffe

“Others have argued that residential care is a cheaper option than helping people to live at home. However, the experience of many local authorities shows that appropriate interventions and support-the right housing, adaptations and equipment, including telecare-can help people to live at home at a lower cost than going into residential care. Indeed, as I said a little earlier, last week's report by the Audit Commission, Under Pressure, made these points most effectively and forcefully. Local Authorities must invest in new models of care. It is no longer acceptable for them to invest in the same old models of care-home care and residential care-as they have in the past”.

Section 3

Link: <http://www.theyworkforyou.com/lords/?id=2010-02-22a.872.0> – no references to telecare on this page

Section 4

<http://www.theyworkforyou.com/lords/?id=2010-02-22a.887.2>

Lord Best

“...I understand that it is in the reablement section that one finds the opportunity for some funds for aids and adaptations to people's homes, including telecare sensors and alarm systems that can alert care providers elsewhere...”

Baroness Thornton

“...We have also specifically promoted the development of telecare and other technologies through the £80 million preventive technologies grant made some years ago. On top of this, the Bill offers further support for reablement services, which include home adaptations and technologies. We are not just talking about the amount of money allocated by the activities of this Bill, but about building on other resources which are already available for adaptations to people's homes...”

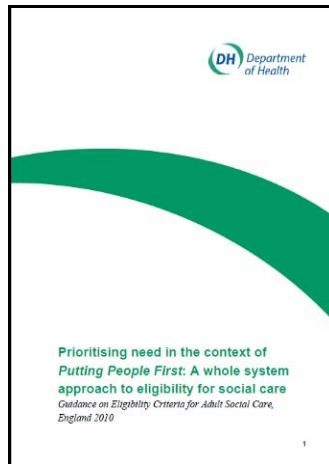
6 DH publications

Mike Clark reports on the latest DH publications that may be of interest

- a) **Headline 2 - Prioritising need in the context of Putting People First: a whole system approach to eligibility for social care - guidance on eligibility criteria for adult social care, England 2010 (DH, Feb 2010)**

This guidance is issued under section 7(1) of the Local Authority Social Services Act 1970 and replaces Fair access to care services - guidance on eligibility criteria for adult social care which was issued in 2003. This guidance will need to be applied from April 2010.

There are telecare references in this new document.



Link:

http://www.dh.gov.uk/en/Publicationsandstatistics/Publications/PublicationsPolicyAndGuidance/DH_13154

b) Helping hand for care and support housing (DH, Feb 2010)

Speaking at a Laing and Buisson conference, Care Service Minister Phil Hope announced a £3.5 million innovation fund and urged councils to “act now and act decisively” to improve the quality and range of housing options for older people.

Every Council with Adult Social Care responsibility will be awarded approximately £20,000 to develop or update its extra care housing strategy. Councils will be expected to showcase their strategies, promote good practice and exchange ideas on innovative approaches to housing with care on a new on-line web-resource.

Phil Hope, said 'Innovative houses that meet the needs and aspirations of older people are vital to the future of care and support. They are at the heart of the technological change that will define our ageing society, enable more people to live well and live independently in their own home for longer.

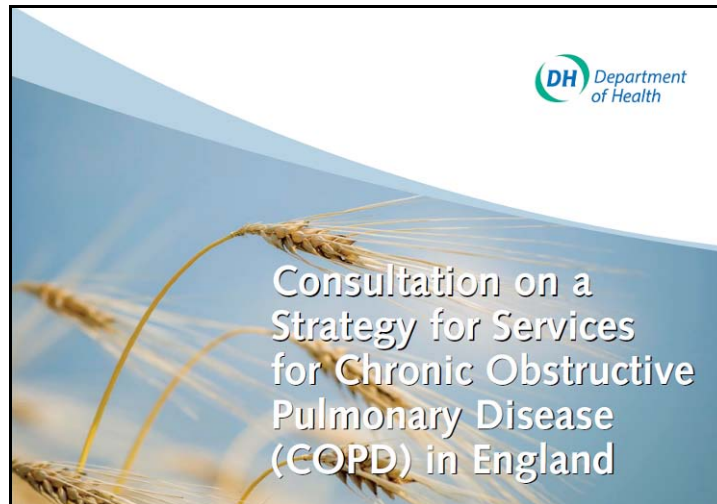
Link: http://www.dh.gov.uk/en/News/Recentstories/DH_113092

c) DH launches consultation on a strategy for Chronic Obstructive Pulmonary Disease (DH, Feb 2010)

The strategy (for consultation) sets out a number of clear recommendations to improve outcomes for patients and help to reduce the cost of COPD to the NHS including:

- Identifying the disease earlier
- improving diagnosis of COPD and asthma
- helping people to manage their condition better through structured education and exercise
- reducing admissions and re-admissions to hospital
- improving access to end of life care
- working to prevent COPD

There are telehealth references in the document including South East Essex PCT.



Links:

http://www.dh.gov.uk/en/Consultations/Liveconsultations/DH_112977

http://www.dh.gov.uk/en/News/Recentstories/DH_113007

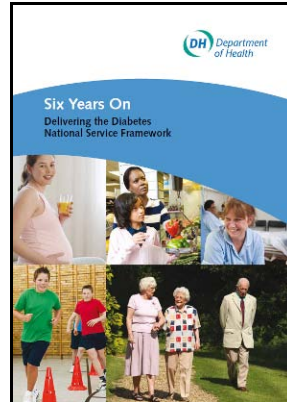
d) NHS to provide more care at home (DH, Feb 2010)

“...Focusing on providing care at home can also have a significant impact for social care. A report out today (Thursday 18 February) from the Audit Commission shows that older people who have the opportunity to be looked after in their own home if they want to are happier and there are less costs to the taxpayer. There are already examples of how being innovative can have significant outcomes and save money – for example, for the cost of just one month’s care package, a home can be equipped with sensors and pagers to help a family look after a relative with dementia.

http://www.dh.gov.uk/en/News/Recentstories/DH_112688

e) NHS diabetes care continues to improve (DH, Feb 2010)

“The NHS Technology Adoption Centre has selected insulin pumps as part of its work programme, and is looking at ways to drive the uptake of this technology in the NHS. It is working with the NHS to consider ways in which a sustainable insulin pump therapy service can be established”.



Link:

http://www.dh.gov.uk/en/News/Recentstories/DH_112521

http://www.dh.gov.uk/en/Publicationsandstatistics/Publications/PublicationsPolicyAndGuidance/DH_112509

f) Fairer health in the future (DH, Feb 2009)

The report “Fair Society, Healthy Lives” is a thorough and comprehensive analysis of health inequalities in England today and it identifies key areas for future action. It will help set the direction beyond current targets, for the next 10 years and beyond.

http://www.dh.gov.uk/en/News/Recentstories/DH_112296

g) Quality Accounts (DH, Feb 2010)

From April 2010, all providers of acute, mental health, learning disability and ambulance services will be required to produce a Quality Account. Further work is underway to develop Quality Accounts for primary care and community services providers with the aim to bring these providers into the requirement by June 2011 subject to a testing and evaluation exercise.

Links:

<http://www.dh.gov.uk/en/Healthcare/Highqualitycareforall/Qualityaccounts/index.htm>

http://www.dh.gov.uk/en/Publicationsandstatistics/Publications/PublicationsPolicyAndGuidance/DH_112359

http://www.dh.gov.uk/en/Consultations/Responsestoconsultations/DH_111895

h) Quality and productivity – workstreams announcement (DH, Feb 2010)

The following workstream leads have been announced.

Commissioning and pathways

- Safe Care – Maxine Power, DH
- Right Care – Sir Muir Gray, DH
- Long Term Conditions – Sir John Oldham, DH
- Urgent Care – Sir John Oldham, DH
- End of Life Care – Sophia Christie, Birmingham East and North PCT

Provider efficiency

- Back office efficiency and optimal management – Tony Spotswood, Royal Bournemouth and Christchurch Foundation Trust
- Procurement – Philippa Slinger, Berkshire Healthcare Foundation Trust
- Clinical support – Dr Ian Barnes,
- Supporting staff productivity – Lorraine Foley, NHS Institute
- Medicines use and procurement – Peter Rowe, Ashton, Leigh and Wigan PCT

System enablers

- Primary care contracting and primary care commissioning – Dame Barbara Hakin, NHS East Midlands
- Technology and digital vision – Christine Connelly, DH

http://www.dh.gov.uk/en/Healthcare/Highqualitycareforall/Qualityandproductivity/DH_112316

i) Transforming Community Services: The assurance and approvals process for PCT-provided community services

http://www.dh.gov.uk/en/Publicationsandstatistics/Publications/PublicationsPolicyAndGuidance/DH_112147

j) World class commissioning - January 2010

http://www.dh.gov.uk/en/Publicationsandstatistics/Lettersandcirculars/Dearcolleagueletters/DH_111879

k) Other DH announcements

Code of conduct for Payment by Results: from 1 April 2010

http://www.dh.gov.uk/en/Publicationsandstatistics/Publications/PublicationsPolicyAndGuidance/DH_112265

http://www.dh.gov.uk/en/Publicationsandstatistics/Publications/PublicationsPolicyAndGuidance/DH_112284

NHS Costing Manual 2009-2010

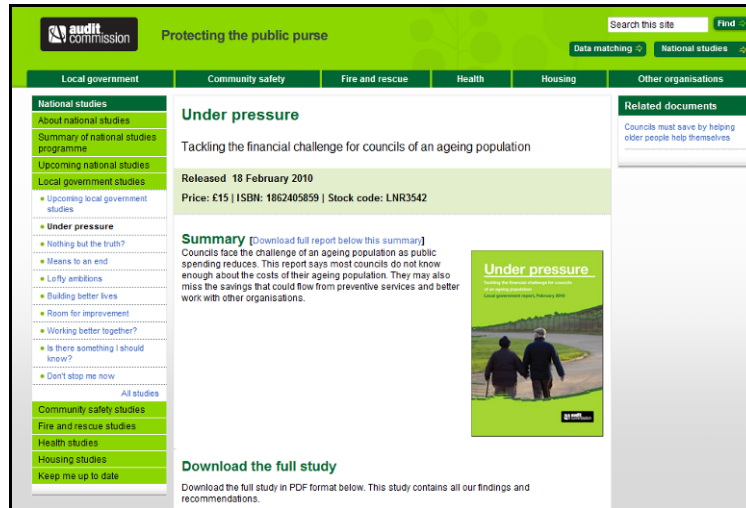
http://www.dh.gov.uk/en/Publicationsandstatistics/Publications/PublicationsPolicyAndGuidance/DH_112597

World class commissioning - February 2010 update

http://www.dh.gov.uk/en/Publicationsandstatistics/Lettersandcirculars/Dearcolleagueletters/DH_112669

7) Audit Commission – Under Pressure – tackling the financial challenges of an ageing population

This report contains several telecare references including North Yorks and has been extensively referenced.



<http://www.audit-commission.gov.uk/nationalstudies/localgov/underpressure/Pages/default.aspx>

8 News and links

News from around the world covering telecare, telehealth and related areas of interest to commissioners, service providers, suppliers and other organisations – prepared by Mike Clark

Telecare (See also Section 4)

Telecare can help UK cope with growing issue of the elderly (Scotland)

<http://scottishhealthcare.co.uk/353/telecare-elderly/>

Tunstall Response Receives Top Industry Accreditation for High Quality of Telecare Monitoring

<http://www.ehealthnews.eu/tunstall/1895-tunstall-response-receives-top-industry-accreditation-for-high-quality-of-telecare-monitoring>

Councils drop warden case appeals

<http://www.insidehousing.co.uk/story.aspx?storycode=6508344>

Aerotel and EcoTec Launch New Personal Telecare Service in Finland

<http://www.ehealthnews.eu/industry/1882-aerotel-and-ecotec-launch-new-personal-telecare-service-in-finland->

Driving up standards in Wolverhampton - Posted by JIP West Midlands | Friday, 29 January 2010

Four key areas have been prioritised for improvement by Wolverhampton City Council as part of implementation of the city's Dementia Care Strategy.

They are:

- dementia care in residential homes

- community support for people with dementia
- housing and telecare
- training the workforce.

<http://www.wjipwestmidlands.blogspot.com/2010/01/driving-up-standards-in-wolverhampton.html>

£1.3m moneypot unveiled to support the development of telecare products and services
<http://www.hesmagazine.com/show.php?page=story&id=1716&story=1716>

Charity wants 'fair and affordable' care
<http://www.lgcplus.com/news/social-care/charity-wants-fair-and-affordable-care/5010828.article>

New telecare centre announces major funding opportunities for telecare businesses
http://www.sourcewire.com/releases/rel_display.php?relid=53413

New Health Care Device Technology Helps Dementia Patients (COGKNOW Project)
http://thegovmonitor.com/world_news/europe/new-health-care-device-technology-helps-dementia-patients-23388.html

Can innovation push limits of traditional PERS?
<http://www.ageinplacetech.com/blog/pers-growth-opportunity-security-companies>

SSAIB Telecare Scheme - Service Providers Morning Seminars – list of dates
http://www.ssaib.org/Calendar_details.asp?ID=8

Plug-in telecare device helps elderly retain independence and carers peace of mind
<http://www.bjhcim.co.uk/news/2010/n1002016.htm>

Harrogate telecare leads the way in prevention
<http://serkadis.com/index/307126>

Care and support webchat – Phil Hope (telecare reference)
<http://serkadis.com/index/307126>

Social care investment 'key to efficiency'
<http://www.localgov.co.uk/index.cfm?method=news.detail&id=86265>

Assistive Technology Helps Dementia Sufferers Get Through the Day
<http://www.sciencedaily.com/releases/2010/02/100209124356.htm>

Councils urged to take up telecare
http://www.ehiprimarycare.com/news/5657/councils_urged_to_take_up_telecare

Councils 'will struggle with ageing population' – telecare reference
<http://news.bbc.co.uk/1/hi/uk/8520800.stm>

Telecare - Newport

Some [investment](#) will also need to be made in one-off projects to help support the budget over the next three to four years.

This includes investing £500,000 over the next two years in a Telecare system, which will allow older people to stay in their own homes and the council to save £750,000 a year by 2012/13.

http://www.southwalesargus.co.uk/news/5012969.Cabinet_agrees_council_tax_rise/

SEHTA/SEEDA Voucher Scheme 2010 - **deadline**

SEHTA
improving health

Home | Sign In | Join Now | Contact Us

About us
 Health technology
 Useful contacts
 Forums
 Member benefits: buying power
 Podcasts
 Telecare
 Membership
 News
 Events
 RSS Feeds

SEHTA/SEEDA Voucher Scheme 2010

29 Jan 2010

Summary
Ten £4,000 innovation vouchers will be available as part of a 'pilot' scheme to promote and enable SMEs to build on innovation and research capabilities through buying support in the form of access to the facilities and expertise of Universities based in the south east of England.

Description of the programme – How will it be delivered?
The scheme is available to small and medium sized businesses based in South East England (SEEDA area). Eligible companies will be operating in the 'Telecare' sector with little or no prior interaction with Universities, and will have the willingness and potential to collaborate on developing innovative products, processes or services. SEHTA will assist these companies in gaining access to regional Universities' expertise and facilities. The SMEs will be able to use this expertise to get help with projects that they themselves do not have the technology or expertise to complete.

At the end of the project, the SME will produce a short report. SEEDA and SEHTA reserves the right to use these projects as case studies, and the option of anonymity will be given. All vouchers awarded will be followed up 6 months after redemption to assess the success of the scheme.

Type of assistance
Assistance available from the public sector would be provided as redeemable vouchers up to £4,000. Each company supported in the scheme would be eligible for one voucher only.

The supply of service will be subject to the Universities' terms and conditions. SMEs receiving vouchers must agree to case studies being produced, in reference only, to their involvement in the scheme.

For more information on this scheme [click here](#).

Buy
improving buying

NEWS
 Press Release - Captec, Microsoft and Intel
15 Feb 2010
 Press Release: New patient information system for Scotland
9 Feb 2010
 HealthTech & Medicines KTI CASE Awards 2010
9 Feb 2010
[more](#)

EVENTS
 Destination India – Your essential guide to doing business in India
23 Feb 2010 - 09:00
 ODN BioTuesday: Regional MedTech Forum
23 Feb 2010 - 09:00
 An opportunity to meet distributors/buyers from Singapore
1 Mar 2010 - 09:00
[more](#)

<http://www.sehta.co.uk/node/2162>

St Clears woman saved by Carmarthenshire County Council Careline pendant

Western TELEGRAPH

Get involved: send your pictures, video, news & views by texting WT NEWS to 803360, or email [\[email\]](#)

SEARCH

[News](#) | [Sport](#) | [Leisure](#) | [Info](#) | [Your Say](#) | [Blog](#) | [Video News](#) | [Families](#) | [Jobs](#) | [Homes](#) | [Cars](#) | [Money](#) | [Dating](#) | [Buy & Sell](#) | [Adverts](#) | [Adverts](#)

National News | Video News | National Video News | County News | My Pembrokeshire | Picture Galleries | Free Email Bulletin |

Western Telegraph » News »

NEWS

St Clears woman saved by Carmarthenshire County Council Careline pendant

2:10pm Sunday 14th February 2010

[Print](#) | [Email](#) | [Share](#) | [Comments\(0\)](#)

An 85-year-old St Clears resident has praised her emergency helpline's staff for saving her life.

Jeanne Walsop fell at home during the freezing weather conditions in January. Luckily, she was wearing her pendant from Careline – Carmarthenshire County Council's 24-hour service for elderly, disabled and vulnerable people – and within seconds of her raising the alarm, help was on its way.

"I was putting out bread for the birds when I slipped on the step, landed on my back and banged my head," said Mrs Walsop. "I was wearing my Careline pendant, and I thought 'thank heavens for that'!

"Within seconds I had a response – I heard a voice come over and the gentleman on the other side said 'hang on Mrs Walsop, we are sending someone to help'. Within minutes my

85-year-old Jeanne Walsop from St Clears credits her Careline pendant with saving her life

WHAT'S ON | **LIVE TRAVEL**

Add your event » | See all events » | February 2010

S	M	T	W	T	F
31	1	2	3	4	5
7	8	9	10	11	12
14	15	16	17	18	19
21	22	23	24	25	26
28	1	2	3	4	5

FEATURED JOBS

Service Manager Haverfordwest
Sales Person Haverfordwest
CARER SUPPORT WORKERS Caregign and Pembrokeshire
Trained Motor Vehicle Technician Pembrokeshire

LOCAL ADVERTISERS

Associate Membership Offer | IMONEYBACK MORTGAGE | IMONEYBACK CREDIT CARDS | Click here for the latest

http://www.westerntelegraph.co.uk/news/5005733.Jeanne_saved_by_Careline_pendant/

Ability Answers – Telecare

<http://www.abilityanswers.com/telecare-and-personal-alarms-c-35.html>

i) Telehealth

Mayo to Study Home Telehealth

http://www.healthdatamanagement.com/news/telehealth_mayo_home_health_telemedicine-39817-1.html

Telemedicine can enhance lives of chronically ill patients

<http://frontierindia.net/pharma/telemedicine-can-enhance-lives-of-chronically-ill-patients/809>

Industry fears legal barriers to telehealth

<http://www.euractiv.com/en/health/industry-fears-legal-barriers-telehealth-news-279405>

Health technology saves the life of Birmingham patient

“...An innovative healthcare machine which is no bigger than a radio alarm clock has saved the life of a Birmingham patient only weeks after she had started to use it.

As part of her care package, Carol was offered Assistive Technology equipment, including a Genesis machine that allows her to take readings of her weight, pulse, oxygen level and blood pressure in her own home. Patients do this at certain times of the day to suit them, in response to questions asked out loud by the machine. If the readings give cause for concern, the patients Birmingham OwnHealth Care Manager alerts their Assertive Case Manager, who is based in the community. The Assertive Case Manager can go on the road to check up on that patient if necessary.

Sophie Byrne, Carols Assertive Case Manager, takes up the story: Carol was known to have low oxygen levels and had been admitted to hospital many times due to her COPD, so I set her up on the Assistive Technology soon after our first assessment.

Just two weeks later, the machine recorded that her oxygen levels were dangerously low. However, when I visited her other levels were normal and she was not short of breath, so she was reluctant to go to hospital. I persuaded her to go to hospital that day and as soon as she arrived, she was on NIV (non-invasive ventilation). Her family were called to the hospital by the doctors and informed that she may not survive.

However, the following day they started reducing her treatment and she was sitting eating toast when I called. She was discharged a few days later and was able to enjoy Christmas at home with her family. I am sure that had she have fallen asleep with those oxygen levels she would have died, and believe the Assistive Technology saved her life.

Carol added: Without the Assistive Technology machine, without a doubt I wouldn't be here today. I knew that I was dying. I would recommend the Assistive Technology to everyone; in fact, when I was in hospital I recommended it to the lady in bed next to me!...”

<http://www.prfrog.co.uk/pr/health-technology-saves-the-life-of-birmingham-patient-4109.html>

Bosch Healthcare and CMO-The Care Management Company Partner with Medicare to Evaluate Telehealth in Managing Care for Medicare Beneficiaries with Chronic Conditions
http://www.healthbuddy.com/content/language1/html/6377_ENU_XHTML.asp

I) Mobile health

Washington signals possible FDA regulation of mHealth
<http://mobihealthnews.com/6726/washington-signals-possible-fda-regulation-of-mhealth/>

Smartphones are the new stethoscope – Eric Topol video now available

Smartphones Are the New Stethoscope
 By Stacey Higginbotham | Feb. 26, 2010, 6:24am PST | 1 Comment

Smartphones could be the most important diagnostic tool of this century as part of a revolution in digital wireless medical devices, according to Dr. Eric Topol, a cardiologist working at The Scripps Research Institute, speaking at the [TedMed conference](#) last year. In a video released earlier this week, Topol shows off patches communicating with his smartphone to continuously monitor his vital signs.

I spoke briefly about this [intersection](#) of medicine and technology with Dr. Mohit Kaushal, director of health care for the FCC's Broadband Strategy Initiative, earlier this week, who said that the [FCC](#) and the [FDA](#) were trying to establish rules to approve regulations that would allow diagnostics to move to smartphones. And who knows, maybe if the smartphone becomes useful for medical monitoring, perhaps those costly data plans will be reimbursed by insurance providers.

TED Ideas worth spreading
Handheld Ultrasound—The New Stethoscope?

STACEY'S POSTS
 Meet the iPad's Micro SIM
 Pokey Mobile Broadband Isn't Cutting it in the New App Era

SUBSCRIBE BY EMAIL
 Email address

MOST RECENT
 webOS with Flash, Video Recording for Sprint Customers Today?
 Apple Shareholder's Meeting Roundup

<http://gigaom.com/2010/02/26/smartphones-are-the-new-stethoscope/>

M-Health: Smart Band-aids, Telemedicine, and Crowdsourced Physiological Data
<http://www.mobilebehavior.com/2010/02/24/m-health-smart-band-aids-telemedicine-and-crowdsourced-physiological-data/>

Telehealth 'to take off by 2012' (InMedica Report)
http://www.ehiprimarycare.com/news/5588/telehealth_to_take_off_by_2012

Telehealth put on the (Google) map
[http://www.ehiprimarycare.com/news/5610/telehealth_put_on_the_\(google\)_map](http://www.ehiprimarycare.com/news/5610/telehealth_put_on_the_(google)_map)

SCOTLAND LEADS THE WAY IN TELEHEALTH
<http://www.publicnet.co.uk/abstracts/2010/02/01/scotland-leads-the-way-in-telehealth/>

Telehealth Market Fuelled by Healthcare Demands
http://www.hospimedica.com/?option=com_article&Itemid=294727817&cat=Health%20IT

Lee Memorial Home Health Nurses Tracks Patient Vitals... Virtually
<http://www.pr.com/press-release/212123>

TeleAM - Innovation comes home

<http://www.carefusion.com/products-and-services/products-services-categories/research-services/TeleAM.aspx>

COCIR publishes telehealth toolkit

http://www.ehealthurope.net/news/5658/cocir_publishes_telehealth_toolkit
<http://cocir.org/content.php?level1=14&level2=&mode=24&id=58>

j) Mobile

FCC to promote mobile health apps in broadband plan

<http://www.govhealthit.com/newsitem.aspx?nid=73091>

How do home care agencies use technology?

<http://www.ageinplacetech.com/blog/how-do-home-care-agencies-utilize-technologies>

Norwegian University Develops Self Help System To Monitor Diabetes Patients

<http://www.egovmonitor.com/node/33376>

Does mHealth need a doctor's prescription?

<http://mobihealthnews.com/6385/does-mhealth-need-a-doctors-prescription/>

@mHI AT&T highlights 3 iPhone hospitals

<http://mobihealthnews.com/6379/mhi-att-highlights-3-iphone-hospitals/>

@mHI Medical Minutes: One incentive approach

“Last year Washington DC-based George Washington Medical Center teamed up with WellDoc and Medicaid PPO clinic, Chartered Health Family Clinic to determine the efficacy of an intensive mobile phone based program for Medicaid patients with diabetes. The program is currently underway.

Katz said the program aims to cut down on emergency department visits and hospitalizations, improve diabetes HEDIS goals, reduce A1c, improve self-management of co-morbidities, improve medical adherence, decrease medical errors and enhance medical information exchange”.

<http://mobihealthnews.com/6373/mhi-medical-minutes-one-incentive-approach/>

eHealth vs. mHealth

<http://mobihealthnews.com/6359/mhi-mhealth-revolution-is-unstoppable/>

A&D, AWS, MedApps, Nonin aid Haiti

<http://mobihealthnews.com/page/3/>

Halo Monitoring Announces iPhone App

http://news.yahoo.com/s/prweb/20100206/bs_prweb/prweb3573184_1

Gartner Says Consumers Will Spend \$6.2 Billion in Mobile Application Stores in 2010

<http://www.fiercewireless.com/press-releases/gartner-says-consumers-will-spend-6-2-billion-mobile-application-stores-2010>

10 more takes: healthcare industry on iPad



<http://mobihealthnews.com/6345/10-more-takes-healthcare-industry-on-ipad/>

Smartphones are the new stethoscopes



<http://www.sdn.com/sandiego/2010-02-05/health-fitness/smartphones-are-the-new-stethoscopes>

FCC to promote mobile health apps in broadband plan
<http://www.govhealthit.com/newsitem.aspx?nid=73091>

Europe 'has no mobile health policy'
<http://www.ehealthurope.net/news/5636/europe 'has no mobile health policy'>

Broadcom(R) Bluetooth(R) Enables Mobile Phones to Keep Track of User's Health
<http://www.prnewswire.com/news-releases/broadcomr-bluetoothr-enables-mobile-phones-to-keep-track-of-users-health-83875607.html>

UPDATE 1-Medicines not working? There's an app for that
<http://www.reuters.com/article/idUSLDE61A1UK20100211>

Six differences between mHealth and eHealth
<http://mobihealthnews.com/6624/six-differences-between-mhealth-and-ehealth/>

Cook Children's Hospital (Texas) launches iPhone application
<http://www.star-telegram.com/news/story/1970045.html>

WebMD Enhances Mobile Content
http://www.healthdatamanagement.com/news/decision_support_clinicians_web_iPhone-39791-1.html

Docs using mobile apps at the point of care
<http://www.healthcareitnews.com/news/docs-using-mobile-apps-point-care>

k) Long term conditions

Diabetes sugar 'can go too low'
<http://news.bbc.co.uk/1/hi/health/8481770.stm>

Better child-diabetes care urged
<http://news.bbc.co.uk/1/hi/health/8501360.stm>

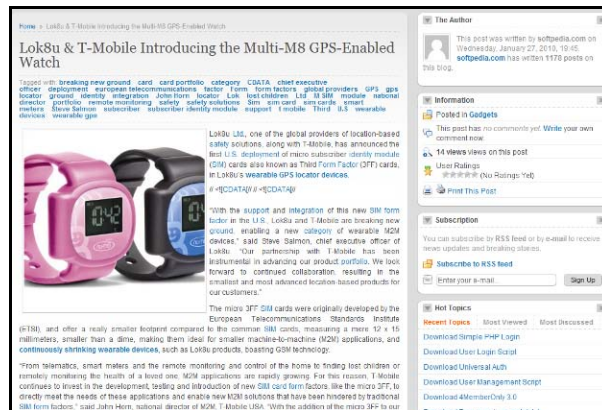
l) General/telemedicine

Technology enables doctor to visit homebound patients (Chicago)
<http://www.suntimes.com/health/2012338.FIT-News-Prof27.article>

VA's Telehealth: Wherever You Are, You're Not Too Far
http://www.facebook.com/note.php?note_id=275181369260&comments&ref=mf

The WIN Human Recorder – A Patch To Monitor Your Health
<http://singularityhub.com/2010/01/27/the-win-human-recorder-a-patch-to-monitor-your-health/>

Lok8u & T-Mobile Introducing the Multi-M8 GPS-Enabled Watch



m)

n)

<http://www.soft4000.com/gadgets/lok8u-t-mobile-introducing-the-multi-m8-gps-enabled-watch/>

Telemedicine may help community hospitals in early treatment of severely injured patients
<http://www.news-medical.net/news/20100128/Telemedicine-may-help-community-hospitals-in-early-treatment-of-severely-injured-patients.aspx>

Telemedicine for Diabetic Teaching

<http://clinicore.blogspot.com/2010/01/telemedicine-for-diabetic-teaching.html>

Medicine at Work brings the doctor to you

http://www.ajc.com/health/medicine-at-work-brings-286011.html?cxtype=rss_news_128746



o)

<http://media.www.gwhatchet.com/media/storage/paper332/news/2010/01/28/News/Diagnosing.Disease.From.A.Distance-3859618.shtml>

Telemedicine Being Used to Reach Medically Underserved (California)

<http://www.medicexchange.com/Healthcare-Informatics/telemedicine-being-used-to-reach-medically-underserved.html>

Are doctors ready to accept remote medicine?

<http://www.kevinmd.com/blog/2010/01/doctors-ready-accept-remote-medicine.html>

Cisco leading telemed project at 15 underserved sites in California

<http://www.fiercehealthit.com/story/cisco-leading-telemed-project-15-underserved-sites-california/2010-01-25#ixzz0eDqLTFPs>

The Law Commission is looking at the consolidation of 50 years of social care legislation.

<http://www.communitycare.co.uk/Articles/2010/02/24/113879/Law-Commission-to-draft-new-adult-social-care-law.htm>

No 10 - Towards a national care service – 8 Feb 2010

<http://www.number10.gov.uk/Page22396>

No 10 Transcript of speech at King's Fund (8 Feb 2010):

<http://www.number10.gov.uk/Page22402>

Adult Social Care in Need of a Radical Overhaul (HSMC)

<http://www.hsmc.bham.ac.uk/news/news/2010/2/social-care-reform.shtml>

Dementia Services Debate (27 January 2010) – House of Commons

“.....Phil Hope: Our work on prevention has been hugely successful, and we have seen best practice on matters such as preventing older people from falling over and getting fractures and improving access to services such as affordable foot care. There has been new guidance on intermediate care and new support for services such as audiology and telecare. Research has now proved that if we put a pound into prevention, to provide people with help in their own homes, we save £1.20 in acute care by reducing the number of people going into it....”

<http://www.theyworkforyou.com/debates/?id=2010-01-27a.815.1&s=telecare#g865.0>

PCTs urged to invest in prevention

Primary care trusts could save more than £6.7m in five years by investing less than half that in measures to prevent ill health, according to an independent report commissioned by the government.

The report forecasts that PCTs which invest £3.1m in measures to reduce rates of obesity, smoking and excessive alcohol intake will make net savings of £6.7m after five years - with £3.3m saved on alcohol related illnesses, £1.2m on smoking and £2.2m on obesity.

Link: <http://www.hsj.co.uk/5011042.article>

Doing more with less - A credible strategy for restoring the public finances

Telecare and telehealth references:

>“Better use of innovative service delivery such as, using telecare technology – for example, fall prevention technology and monitors – could prevent 70,000 older people from entering residential care every year. This would deliver in the range of £5-7bn of cost savings to the adult social care budget by 2015-16, giving older people and their families the confidence to stay independently in their own homes

>Improved community support and installation of telehealth care monitors in the homes of patients suffering from the lung-related illness COPD has enabled Sheffield PCT with Tunstall to reduce the number of admissions to hospital by 50%. If half of hospital emergency admissions across England were avoided – around 50,000 patients – the total saving by 2015-16 would be £666m

>Patients with long-term conditions in Newham are managing their care at home through the help of Serco’s visiting community matrons. A 2007 study of the scheme found emergency hospital admission had fallen by 26%, A&E admission had fallen by 16% and non-routine contacts with primary care had fallen by 57%. The project is on target to save the NHS £5m over the next five years”.

Link:

[http://www.cbi.org.uk/ndbs/Press.nsf/38e2a44440c22db6802567300067301b/f2aa76202344d1a880257650005a50e7/\\$FILE/CBI-Doing%20More%20With%20Less.pdf](http://www.cbi.org.uk/ndbs/Press.nsf/38e2a44440c22db6802567300067301b/f2aa76202344d1a880257650005a50e7/$FILE/CBI-Doing%20More%20With%20Less.pdf)

NHS 'could save £15bn' treating more patients at home

<http://www.guardian.co.uk/society/2010/feb/03/nhs-home-treatment-care>

Integrated care pilots expansion

http://www.dh.gov.uk/en/Healthcare/IntegratedCare/Integratedcarepilots/DH_111797

Experts unite to boost dementia research

http://www.dh.gov.uk/en/News/Recentstories/DH_113098

Innovation Is Key to Health Care Shift From Chronic Disease to 'Chronic Health'

<http://www.virginia.edu/uvatoday/newsRelease.php?id=11063>

Practice-based commissioning and COPD in Easington

http://www.bjcn.co.uk/cgi-bin/go.pl/library/article.html?uid=46398;article=BJCN_15_2_87

The direct route to better care

http://www.publicservice.co.uk/feature_story.asp?id=13662

eHealth, Education Get Top Billing in Broadband Plan Update

<http://www.wirelessweek.com/News/2010/02/Policy-and-Industry-eHealth-Education-Top-Billing-Broadband-Plan-Healthcare/>

InTouch Health Performs More Than 100,000 Clinical Sessions via Remote Presence Telemedicine Network

<http://healthcare.tmcnet.com/topics/healthcare/articles/76945-intouch-health-performs-more-than-100000-clinical-sessions.htm>

Councils should spend more wisely to serve older people better and put prevention first

http://www.caringbusiness.co.uk/c/portal/layout?p_l_id=259730&CMPI_SHARED_articleId=3745002&CMPI_SHARED_ImageArticleId=3745002&CMPI_SHARED_articleIdRelated=3745002&CMPI_SHARED_ToolsArticleId=3745002&CMPI_SHARED_CommentArticleId=3745002&articleTitle=Councils%20should%20spend%20more%20wisely%20to%20serve%20older%20people%20better%20and%20put%20prevention%20first

Healthcare innovation: The cost killer?

<http://www.euractiv.com/en/health/healthcare-innovation-cost-killer-linksdossier-287514>

Transforming community services for people with long term conditions

<http://www.hsj.co.uk/5011088.article>

Telepresence Feature: Telemedicine Saves California \$13 Million

<http://www.tmcnet.com/channels/telepresence/articles/75762-telepresence-feature-telemedicine-saves-california-13-million.htm>

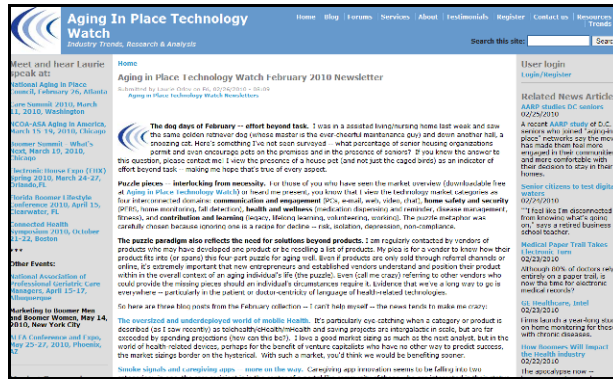
Disruptive Innovations Are Altering Patient Encounters - Telemedicine, connected care and retail clinics are changing the face, and face time, of medicine.

http://www.revophth.com/index.asp?page=1_14580.htm

Fast Company selects top innovators in healthcare

<http://www.healthcareitnews.com/news/fast-company-selects-top-innovators-healthcare>

Aging in Place web site



<http://www.ageinplacetech.com/newsletter/aging-place-technology-watch-february-2010-newsletter>

Specialist nurse role 'critical to care'
<http://news.bbc.co.uk/1/hi/health/8530511.stm>

Stroke incidence rising among younger adults, decreasing among elderly
http://www.eurekalert.org/pub_releases/2010-02/aha-sir022410.php

Hospital Care at Home report

Home care 'could save NHS more than £1bn a year'

The health service could save more than £1bn each year by increasing the number of patients it treats at home rather than in hospital, according to a report seen by HSJ.

Published by Dr Foster Intelligence and private provider Healthcare at Home, the report looks at service changes being introduced by NHS Birmingham East and North and Healthcare at Home. The

<http://www.hsj.co.uk/5011031.article>
<http://www.healthcare-at-home.co.uk/>

Effective self-care "could save the NHS millions"

Self-management programmes for people living with long-term conditions (LTCs) could save the NHS millions every year and significantly improve lives, according to a study.

The Expert Patient Programme Community Interest Company (EPP CIC) reviewed a wide-range of existing data and also conducted new research for its report, published yesterday (2 February 2010).

The report concluded that integrating self-management techniques into service provision could result in cost savings of around £1,800 per person per year.

<http://www.managementinpractice.com/default.asp?title=Effectiveself-care%22couldsavetheNHSmillions%22&page=article.display&article.id=20315>

Integrated EPP 'needed to make savings'
http://www.ehprimarycare.com/news/5611/integrated_epp_'needed_to_make_savings'

CQC publishes the state of health care and adult social care

Drawing on the richest sources of information available, this is the first time that an independent regulator has looked simultaneously across both the health and social care sectors.

http://www.cqc.org.uk/newsandevents/newsstories.cfm?FaArea1=customwidgets.content_view_1&cid_id=35855

<http://www.cqc.org.uk/stateofcare.cfm>

HSMC Report – the case for social care reform (Feb 2010)

The case for social care reform – the wider economic and social benefits (HSMC 8 February 2010)

<http://www.hsmc.bham.ac.uk/news/news/2010/2/social-care-reform.shtml>

There are telecare references in the main report:

http://www.hsmc.bham.ac.uk/news/pdfs/social_reform-final_report-feb2010.pdf

VA budget request for telehealth

“The VA intends to expand the use of cutting edge telehealth technologies and would like to invest in \$163 million in 2011 for home telehealth to take advantage of the latest technological advancement in healthcare delivery. The VA’s home telehealth program cares for 35,000 patients and a recent study found that patients enrolled in home telehealth programs experienced a 25 percent reduction in the average number of days hospitalized and a 19 percent reduction in hospitalizations”.

<http://telemedicineneeds.blogspot.com/2010/02/125-billion-budget-request.html>

TEKEMED Aspen hospital taps stroke specialists via new telemedicine hookup

<http://www.aspentimes.com/article/20100205/NEWS/100209894/1077&ParentProfile=1058>

In Haiti, Practicing Medicine From Afar

<http://www.nytimes.com/2010/02/09/health/09tele.html>

Video program puts docs at bedside 24/7 at MassGeneral

<http://www.healthcareitnews.com/news/video-program-puts-docs-bedside-247-massgeneral>

Telelink boost for patients (Andover)

http://www.andoveradvertiser.co.uk/news/5005582.Telelink_boost_for_patients/

Pfizer and Keas Partner to Help Consumers Take a More Active Role in Their Health and Wellness

http://www.marketwatch.com/story/pfizer-and-keas-partner-to-help-consumers-take-a-more-active-role-in-their-health-and-wellness-2010-02-08?reflink=MW_news_stmp

Telehealth Solutions' HomePod Helping Slash Costs for the NHS (Bute)

<http://www.ehealthnews.eu/industry/1904-telehealth-solutions-homepod-helping-slash-costs-for-the-nhs>

ExpressMD Solutions' Electronic House Call System Chosen by Traditional Home Health and Hospice

<http://www.prnewswire.com/news-releases/expressmd-solutions-electronic-house-call-system-chosen-by-traditional-home-health-and-hospice-84152322.html>

TOSHIBA RECEIVES FDA CLEARANCE FOR VIAMO ULTRASOUND SYSTEM

<http://medical.toshiba.com/news/press-releases/2010/02/04/600/>

First Stroke Patient treated in the Midlands via Telemedicine (Ireland)

http://www.hse.ie/eng/services/news/First_Stroke_Patient_treated_in_the_Midlands_via_Telemedicine.html

European Physician Adoption of Advanced Mobile Activities is Increasing

http://www.manhattanresearch.com/newsroom/Press_Releases/european-physicians-smartphone-activities.aspx

Rural Diabetes Impact Calls for Variety of Outreach Solutions Authors review roles of telemedicine, phone interventions, lay community health advisors

<http://www.modernmedicine.com/modernmedicine/Modern+Medicine+Now/Rural-Diabetes-Impact-Calls-for-Variety-of-Outreac/ArticleNewsFeed/Article/detail/656567?contextCategoryId=40137>

Microsoft E-health Research Taps Xbox, Mobile Phones

http://www.pcworld.com/businesscenter/article/188848/microsoft_ehealth_research_taps_xbox_mobile_phones.html

Have a Medical Question? Text a Group of Doctors

BETA
Truth On Call

HOME HOW IT WORKS CONTACT JOIN MEMBER LOGIN

Critical Input in Real Time

Truth On Call provides an answer from 1000s of physicians within minutes to a question posed by text message.

[LEARN MORE](#)

How it works:

for Physicians

- 1 Question**
Receive a multiple-choice question related to your specialty.
- 8 Seconds**
Answer the question(s) via text message. Your response will be anonymous.
- \$10**
Earn \$10 for every text message response you send. When you've earned \$100, get compensated or donate the money to charity.

for Industry

Sign Up

First Name:

Last Name:

NPI Number:

[GET STARTED](#)

See **examples** of how industry can use Truth On Call.

Truth On Call will never send you advertisements
[Our Privacy Policy](#)

Medical-Devices Sector Could Face Tougher Regulatory Pathway

<http://www.reuters.com/article/idUSTRE61230320100203>

St. Jude Medical Announces European Launch of USB Cellular Adaptor for Merlin@Home Transmitter

http://phx.corporate-ir.net/phoenix.zhtml?c=73836&p=irol-newsArticle_print&id=1385906

Kiosks self-serve satisfaction

<http://health-care-it.advanceweb.com/Features/Top-Story/Kiosks-Self-serve-Patient-Satisfaction.aspx>

Public health: Birmingham gets fit with a purpose

<http://www.hsj.co.uk/5010595.article>

Total Place: why working together boosts independence

<http://www.hsj.co.uk/5010633.article>

How to use the Oneplace website to improve local services

<http://www.hsj.co.uk/5010603.article>

High blood pressure linked to dementia

Hypertension fuels a scarring that can cause Alzheimer's, research shows

<http://www.msnbc.msn.com/id/35063248/>

GE Healthcare Launches Innovative eHealth and Health Information Exchange Portfolio in Europe

<http://www.ehealthnews.eu/ge/1903-ge-healthcare-launches-innovative-ehealth-and-health-information-exchange-portfolio-in-europe>

Cisco predicts wireless-data explosion

http://news.cnet.com/8301-30686_3-10449758-266.html

Blackburn care trust plus given go ahead

<http://www.hsj.co.uk/5011564.article>

Watchdog tells councils to reduce care home spending

<http://www.insidehousing.co.uk/story.aspx?storycode=6508600>

E-Health Struggles Even in Europe

http://www.businessweek.com/globalbiz/content/feb2010/gb20100218_196745.htm

GSMA: Remote monitoring to save up to \$200B

<http://mobihealthnews.com/6531/gsma-remote-monitoring-to-save-up-to-200b/>

Mining the golden years - Canadians want to remain in their own homes as they age

<http://www.theglobeandmail.com/report-on-business/mining-the-golden-years/article1473837/>

Qualcomm's vision of future digital healthcare explored

<http://www.wired.co.uk/news/archive/2010-02/16/qualcomm's-vision-of-future-digital-healthcare-explored.aspx>

Rising Popularity of Home Care Underlines Rise of Care Management Markets Across Europe, Finds Frost & Sullivan

<http://blog.taragana.com/pr/rising-popularity-of-home-care-underlines-rise-of-care-management-markets-across-europe-finds-frost-sullivan-13264/>

Greater Collaboration Between Wireless Carriers and Non-Mobile Industries Needed to Meet Consumers' Desire for Mobile Connectivity, Accenture and GSMA Studies Find

http://www.marketwatch.com/story/greater-collaboration-between-wireless-carriers-and-non-mobile-industries-needed-to-meet-consumers-desire-for-mobile-connectivity-accenture-and-gsma-studies-find-2010-02-15?reflink=MW_news_stmp

Are personal budgets more cost-effective? Is personalisation compatible with saving money?
<http://www.communitycare.co.uk/Articles/2010/02/12/113785/are-personal-budgets-more-cost-effective.htm>

Care system saving cash
http://www.getwokingham.co.uk/news/s/2065681_care_system_saving_cash

Scottish government launches personalisation strategy - 10-year plan promotes individual budgets and mirrors Putting People First programme
<http://www.communitycare.co.uk/Articles/2010/02/09/113761/Scottish-government-launches-personalisation-strategy.htm>

Finnish digital doctors cut workloads
http://www.ehealthurope.net/news/5639/finnish_digital_doctors_cut_workloads

York 'will cope with an ageing population'
http://www.yorkpress.co.uk/news/5014461.York_will_cope_with_an_ageing_population_/?ref=rss

Ultrasound Device Fits in Pocket (GE Healthcare)
http://www.healthdatamanagement.com/news/ultrasound_portable_mobile_imaging-39787-1.html
<http://news.bbc.co.uk/1/hi/health/8521067.stm>

Rosy outlook for people with diabetes
<http://www.cmaj.ca/earlyreleases/10feb10-rosy-outlook-for-people-with-diabetes.dtl>

HIMSS: GE to highlight eHealth platform
http://www.cmio.net/index.php?option=com_articles&view=article&id=20658&division=cmio

Hospital Gives Kids Bedside Web Access - Touchscreen bedside units replace traditional hospital TVs and give pediatric patients Internet access, and a new way to communicate with hospital staff.
<http://www.informationweek.com/news/healthcare/patient/showArticle.jhtml?articleID=222900675>
<http://www.getwellnetwork.com/patientlife.asp>

Xbox to Aid E-Health?
http://techinsider.nextgov.com/2010/02/xbox_to_aid_e-health.php

Telemedicine Care for Prisoners in California
<http://telemedicineneeds.blogspot.com/2010/02/telemedicine-care-for-prisoners.html>

New European effort to promote personal tools for health and wellness
<http://www.healthtechwire.com/The-Industry-s-News-unb.146+M5f07aa6a9b4.0.html>

A "Portable Doctor" device may make life easier for parents with special needs kids
<http://www.examiner.com/x-10560-Special-Needs-Kids-Examiner~y2010m2d15-A-Portable-Doctor-device-may-make-life-easier-for-parents-with-special-needs-kids>

SmartPersonalHealth a New European eHealth Project

<http://www.ehealthserver.com/research-and-development/424-smartpersonalhealth-a-new-european-ehealth-project>
<http://sph.continuaalliance.org/>

Health IT to shape the future of global healthcare

<http://www.healthtechwire.com/The-Industry-s-News-unb.146+M5a9b9931b7a.0.html>

Developing Countries See Promise in E-Health; Challenges Remain

<http://www.ihealthbeat.org/features/2010/developing-countries-see-promise-in-ehealth-challenges-remain.aspx>

Health Affairs: Sustained partnerships needed for global e-health

http://www.cmio.net/index.php?option=com_articles&view=article&id=20705&division=cmio

E-Health Struggles Even in Europe

http://www.businessweek.com/globalbiz/content/feb2010/gb20100218_196745.htm

CardioNet Reaches Significant Milestone of 300,000 Patients Monitored by MCOT™

http://www.businesswire.com/portal/site/home/permalink/?ndmViewId=news_view&newsId=20100203005158&newsLang=en

eCardio: 20,000 hearts monitored wirelessly

<http://mobihealthnews.com/6332/ecardio-20000-hearts-monitored-wirelessly/>

Breakthrough – online mental health services



You aren't signed in. [Login](#) | [Client Sign Up](#) | [Counselor Sign Up](#) | [About Us](#) | [We're Hiring](#)

Breakthrough Home Find a Counselor Forums FAQ

Get counseling anytime, anywhere.
Have your breakthrough.

Talk with a mental health counselor through video, phone, email, or chat.

[SIGN UP!](#) [COUNSELORS, LEARN MORE](#)

Get Expert Help
Speak with someone who has the credentials. All counselors are professionally licensed.

Learn About Yourself
Counseling can provide support, insight and strategies to help you live a more full life.

The Right Counselor
Find a counselor with the right style, experience and expertise.

Are you feeling desperate, alone or hopeless?
Call the National Suicide Prevention Lifeline at 1.800.273.TALK (2255), a free, 24-hour hotline available to anyone.

<http://www.breakthrough.com/>

DH support for developing fracture prevention services

The Department of Health has published an economic evaluation which models the costs and benefits from establishing a fracture prevention service to reduce the risk of secondary fractures among older people, as described in the guide Falls and fractures: effective interventions in health and social care.

<http://www.npci.org.uk/blog/?p=1003>

Fracture prevention services: an economic evaluation

http://www.dh.gov.uk/en/Publicationsandstatistics/Publications/PublicationsPolicyAndGuidance/DH_110098?

Innovative discharge program reduces congestive heart failure readmissions

<http://www.ushour.com/health/innovative-discharge-program-reduces-congestive-heart-failure-readmissions/>

New technology to turn patients into doctors

<http://www.abc.net.au/news/stories/2010/02/01/2807110.htm>

Empowering patients to use technology to manage their care

<http://www.medicinandtechnology.com/2010/02/empowering-patients-to-use-technology.html>

A Captive Audience—and Providers—Benefit from Telemedicine

<http://www.healthleadersmedia.com/content/COM-245964/A-Captive-Audiencemdashand-ProvidersmdashBenefit-from-Telemedicine>

Philips Signs Three-Year Deal for Telemedicine

<http://www.dotmed.com/news/story/11549/>

Breaking Down The Walls of Home Health IT

http://www.cmio.net/index.php?option=com_articles&view=article&id=20442:breaking-down-the-walls-of-home-health-it

Telemetry harness for automatic and online wireless monitoring of vital signs

<http://www.enterpriseeuropeni.com/inx/services/enquire.asp?id=10%20HU%2050R8%203G8H&EnquiryType=BBS>

NHS savings start at home

<http://tunstall-telehealthcare.blogspot.com/2010/02/nhs-savings-start-at-home.html>

Framework for quality accounts: a response to consultation (DH)

http://www.dh.gov.uk/en/Consultations/Responsestoconsultations/DH_111895

NHF: Hospital visits and care home admissions for the elderly could be cut dramatically, new report finds

Services such as adapting older people's homes to make them easier to use, regular visits from a support worker and personal alarms systems which allow users to alert a support worker when they need help – are just some of the simple measures which can help people to remain in their own homes.

[http://www.politics.co.uk/opinion-formers/press-releases/health/nhf-hospital-visits-and-care-home-admissions-for-the-elderly-could-be-cut-dramatically-new-report-finds-\\$1354563\\$364344.htm](http://www.politics.co.uk/opinion-formers/press-releases/health/nhf-hospital-visits-and-care-home-admissions-for-the-elderly-could-be-cut-dramatically-new-report-finds-$1354563$364344.htm)

<http://www.housing.org.uk/default.aspx?tabid=289&mid=2076&ctl=Details&ArticleID=2672>

Britain ignoring its dementia crisis, Oxford study finds

<http://www.guardian.co.uk/lifeandstyle/2010/feb/03/uk-dementia-crisis-feared-worse>

Britain's [dementia](#) crisis is worse than feared and costs Britain £23bn a year – more than cancer and heart disease combined – but receives a fraction of the funding, according to a study published today.

The number of people with dementia, at 822,000, is 17% higher than has previously been estimated and will pass the 1 million mark before 2025, the Oxford university study has found.

<http://www.guardian.co.uk/lifeandstyle/2010/feb/03/uk-dementia-crisis-feared-worse>

Call to address £23bn cost of dementia

Dementia costs the country £23bn a year - more than cancer and heart disease combined - but receives a fraction of the funding, according to a "wake up call" report.

<http://www.hsj.co.uk/5011091.article>

Dementia 2010

<http://www.dementia2010.org/>

Social care: Real reform cast adrift

<http://www.guardian.co.uk/commentisfree/2010/feb/02/social-care-elderly-housing-taxes>

Free care sounds nice, but why redistribute to the rich?

<http://www.guardian.co.uk/commentisfree/2010/feb/02/free-care-rich-brown-elderly>

Total Place: why NHS partnerships make total sense for savings

<http://www.hsj.co.uk/5010350.article>

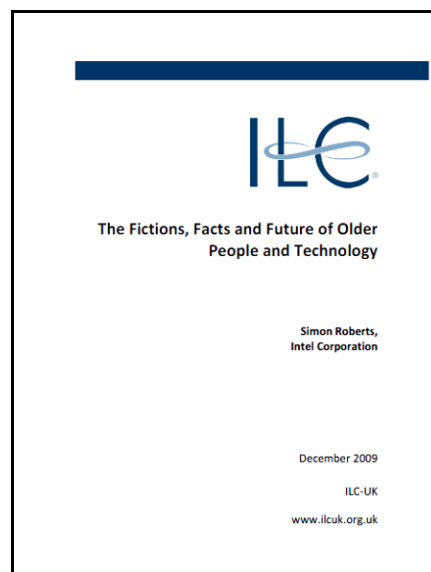
Tattletale pills, bottles remind you to take your meds

<http://www.cnn.com/2010/HEALTH/02/02/pills.medication.compliance/index.html>

Two-Thirds of Healthcare Organizations Use Telehealth (USA)

<http://blog.hin.com/?p=589>

The Fictions, Facts and Future of Older People and Technology



<http://www.ilcuk.org.uk/record.jsp?type=publication&ID=54>

Healthy baby campaign uses texts to reach mothers

<http://www.azcentral.com/business/consumer/articles/2010/02/04/20100204pregnancy-campaign.html>

More than half of Americans use Internet for health

http://news.yahoo.com/s/nm/20100203/hl_nm/us_internet_health

Telemedicine used to handle H1N1 in Alberta

<http://www.canhealth.com/News1295.html>

Systematic review of communication strategies for people with dementia in residential and nursing homes

<http://journals.cambridge.org/action/displayAbstract?fromPage=online&aid=7161256>

Kiosk remote monitoring

KIOSK
Information Systems

800.509.5471 **LIVE HELP** **SALES QUOTE GENERATOR**

STANDARD KIOSKS CUSTOM KIOSKS MARKET SOLUTIONS SERVICES ABOUT CONTACT

SERVICES

Factory Support
Warranty
Site Prep & Installation
Onsite Service
OEM Hardware
Program Management
App Development
Remote Monitoring
Wireless Services

KIOSK REMOTE MONITORING SERVES AS A "NETWORK CONCIERGE"
Services range from full turnkey monitoring & hosting to facilitation of customer's in-house solutions.

Remote Monitoring

Remote monitoring software greatly simplifies the management of your deployed kiosk network. It essentially functions as an information control center to and from the network, providing:

- Real-time information on machine health & immediate status alerts if a kiosk needs attention (inbound information).
- Sales & usage data reports to quantify transaction data (ROI). Collection and analysis of this transaction data.

KIOSK Remote Monitoring Services combines powerful remote monitoring software with our own Network Operations Center (NOC) to provide:

- Simple management of multiple user interfaces, (often unique for single / multiple kiosks).
- Scheduled or immediate user interface updates.
- Patch management for systems.
- Notification and coordination with designated field.

<http://kiosk.eu/support/remote-monitoring.php>

The 'medical home' experiment

<http://www.buffalnews.com/home/story/947496.html>

NHS Direct to increase web presence

The National Pandemic Flu Service, set up last year to take demand off GPs at the height of the swine flu outbreak, had shown the potential role internet assessment could play - more than 40 per cent were completed on the website.

<http://www.hsj.co.uk/5011010.article>

First European deal for HealthVault

http://ehealthurope.net/news/5599/first_european_deal_for_healthvault

Reportlinker Adds Analysis of Telemedicine Market

<http://www.prnewswire.com/news-releases/reportlinker-adds-analysis-of-telemedicine-market-82795892.html>

Boost for 'cost-effective' individual budgets - People given control over their social care funds spent less than their local authority had previously when providing direct services, Department of Health chief

reveals

<http://www.guardian.co.uk/society/2010/jan/28/individual-budgets-cost-effective>

Will Telecare become an Option When Choosing a Retirement Home?

<http://www.marketresearchnewsandreports.info/3231/will-telecare-become-an-option-when-choosing-a-retirement-home/>

Hospitals check up after patients check out

http://www.phillyburbs.com/news/news_details/article/262/2010/january/25/hospitals-check-up-after-patients-check-out-1.html

Overweight elderly 'live longer'

<http://news.bbc.co.uk/1/hi/health/8483456.stm>

Delivering better care at end of life – the next steps (King's Fund)

http://www.kingsfund.org.uk/research/publications/leeds_castle_eolc.html

Mild COPD May Hurt the Heart - Study Shows Chronic Obstructive Pulmonary Disease Is Linked to Impaired Heart Function

<http://www.webmd.com/lung/copd/news/20100120/mild-copd-may-hurt-the-heart>

The real top ten iPhone medical apps

<http://medicinapolispecialistica.wordpress.com/2010/01/31/the-real-top-ten-iphone-medical-apps/>

The Beat Goes On: EKG and Holter Monitors Remain a Predictable Market

<http://www.dotmed.com/news/story/11083/>

A New Decade Resolution: 50% of Care to the Home by 2020 (Intel)

http://blogs.intel.com/healthcare/2010/01/a_new_decade_resolution_50_of_care_to_the_home_by_2020.php

Microsoft CEO: Health care IT market 'confused' and tough to jump into

http://www.nashvillepost.com/news/2010/1/20/microsoft_ceo_health_care_it_market_confused_and_tough_to_jump_into

A daily SMS reminder increases adherence to asthma treatment: A three-month follow-up study

<http://www.resmedjournal.com/article/PIIS0954611109003242/abstract?rss=yes>

Patient enablement via technology

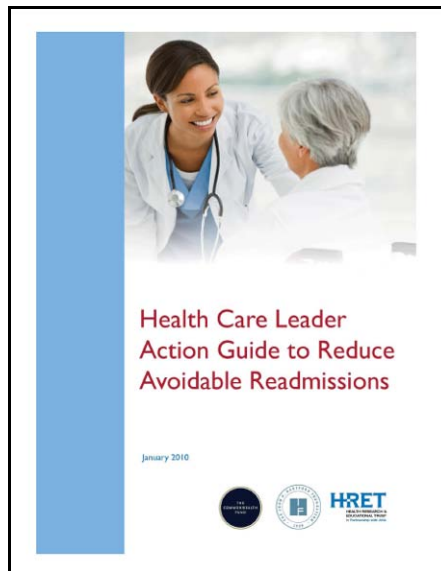
http://www.infosysblogs.com/healthcare/2010/01/patient_enablement_via_technol.html

Report analyzes global telemedicine market with focus on the US and EU

<http://www.news-medical.net/news/20100130/Report-analyzes-global-telemedicine-market-with-focus-on-the-US-and-EU.aspx>

Telemedicine - A Global Update of Market Trends & Opportunities

<http://www.prnewswire.com/news-releases/telemedicine---a-global-update-of-market-trends--opportunities-83019767.html>



Health Care Leader Action Guide to Reduce Avoidable Readmissions (using telehealth at discharge)
<http://www.commonwealthfund.org/Content/Publications/Fund-Manuals/2010/Jan/Health-Care-Leader-Action-Guide.aspx>

Press Release: Number of Embedded Mobile & M2M Connected Devices to rise to 412 million globally by 2014, says Juniper Research
<http://www.juniperresearch.com/shop/viewpressrelease.php?pr=173>

Journal articles

Blood glucose testing and primary prevention of diabetes mellitus type 2 - evaluation of the effect of evidence based patient information
<http://www.biomedcentral.com/1471-2458/10/15>

The relation between health related quality of life and pain, depression, anxiety and functional independence in persons with chronic physical disability
<http://www.agridergisi.org/jvi.asp?pdir=agri&plng=eng&un=AGRI-26817&look4=>

Swedish District Nurses' experiences on the use of information and communication technology for supporting people with serious chronic illness living at home – a case study
<http://www3.interscience.wiley.com/journal/123220751/abstract?CRETRY=1&SRETRY=0>

Evaluation of a web-based lifestyle coach designed to maintain a healthy bodyweight
<http://jtt.rsmjournals.com/cgi/content/abstract/16/1/3>

User acceptance of an Internet training aid for migraine self-management
<http://jtt.rsmjournals.com/cgi/content/abstract/16/1/20>

Remote Diagnosis of Congenital Heart Disease: The Impact of Telemedicine
<http://adc.bmj.com/content/early/2009/11/29/adc.2008.146456.abstract>

A Telestroke Network Enhances Recruitment into Acute Stroke Clinical Trials
<http://stroke.ahajournals.org/cgi/content/abstract/STROKEAHA.109.566844v1>

A daily SMS reminder increases adherence to asthma treatment: A three-month follow-up study
<http://www.resmedjournal.com/article/PIIS0954611109003242/abstract?rss=yes>

Evaluation of a web-based lifestyle coach designed to maintain a healthy bodyweight
<http://jtt.rsmjournals.com/cgi/content/abstract/16/1/3>

Telestroke Network Enhances Recruitment into Acute Stroke Clinical Trials
<http://stroke.ahajournals.org/cgi/content/abstract/STROKEAHA.109.566844v1>

Online, Video-Based Patient Education Improves Melanoma Awareness: A Randomized Controlled Trial
<http://www.liebertonline.com/doi/abs/10.1089/tmj.2009.0055>

An introduction to ambulatory electrocardiography
http://www.cardiac-nursing.co.uk/cgi-bin/go.pl/library/article.html?uid=46025;article=cn_5_1_6

Severe complications of diabetes higher in depressed patients
http://www.eurekalert.org/pub_releases/2010-01/uow-sco012710.php

Anxiety disorders in older adults: a comprehensive review
<http://www3.interscience.wiley.com/journal/123249833/abstract?CRETRY=1&SRETRY=0>

A new model of home-based telemonitored cardiac rehabilitation in patients with heart failure: effectiveness, quality of life, and adherence
<http://eurjhf.oxfordjournals.org/cgi/content/abstract/hfp181v1>

Biomedical Sensors for Ambient Assisted Living
<http://www.springerlink.com/content/xj3777202244r977/>

Severe complications of diabetes higher in depressed patients
http://www.eurekalert.org/pub_releases/2010-01/uow-sco012710.php

Prevalence of heart failure in nursing homes: a systematic literature review
<http://www3.interscience.wiley.com/journal/123238930/abstract?CRETRY=1&SRETRY=0>

Assessing Medication Adherence Simultaneously by Electronic Monitoring and Pill Count in Patients With Mild-to-Moderate Hypertension
<http://www.nature.com/ajh/journal/v23/n2/abs/ajh2009207a.html>

Online programs improve fruit and vegetable consumption
http://www.eurekalert.org/pub_releases/2010-02/hfhs-sop020410.php

Avoid extremes in diabetes treatment, study finds
<http://www.reuters.com/article/idUSTRE60Q01M20100127>

Type 2 diabetes risk cut down by pedometer use

<http://www.healthandage.com/type-2-diabetes-risk-cut-down-by-pedometer-use-16686>

Effectiveness of a Pragmatic Education Program Designed to Promote Walking Activity in Individuals With Impaired Glucose Tolerance - A randomized controlled trial

<http://care.diabetesjournals.org/content/32/8/1404.abstract>

Improving health and productivity of depressed workers: a pilot randomized controlled trial of telephone cognitive behavioral therapy delivery in workplace settings

<http://www.ghpjournal.com/article/PIIS0163834310000071/abstract?rss=yes>

What is the best current management of Stable Angina?

<http://www.rila.co.uk/site/modules.php?name=Journals&file=journal2&func=showab&jid=057&aid=5647&iid=486>

Remote health monitoring adoption model based on artificial neural networks

<http://portal.acm.org/citation.cfm?id=1628483&dl=GUIDE&coll=GUIDE&CFID=76573836&CFTOKEN=65628760>

Home telemonitoring for congestive heart failure: a systematic review and meta-analysis.

<http://jtt.rsmjournals.com/cgi/content/abstract/jtt.2009.090406v1>

Challenges in Antihypertensive Therapy in Older Persons

<http://www.annalsoflongtermcare.com/content/challenges-antihypertensive-therapy-older-persons>

International Diabetes Federation: An update of the evidence concerning the prevention of type 2 diabetes

[http://www.sciencedirect.com/science?_ob=ArticleURL&_udi=B6T5Y-4XNVT7H-1&_user=10&_coverDate=02%2F28%2F2010&_rdoc=3&_fmt=high&_orig=browse&_srch=doc-info\(%23toc%235015%232010%23999129997%231621092%23FLA%23display%23Volume\)&_cdi=5015&_sort=d&_docanchor=&_ct=27&_acct=C000050221&_version=1&_urlVersion=0&_userid=10&md5=8b0a738c99d47853212ff56e9923de10](http://www.sciencedirect.com/science?_ob=ArticleURL&_udi=B6T5Y-4XNVT7H-1&_user=10&_coverDate=02%2F28%2F2010&_rdoc=3&_fmt=high&_orig=browse&_srch=doc-info(%23toc%235015%232010%23999129997%231621092%23FLA%23display%23Volume)&_cdi=5015&_sort=d&_docanchor=&_ct=27&_acct=C000050221&_version=1&_urlVersion=0&_userid=10&md5=8b0a738c99d47853212ff56e9923de10)

Optimal Timing of Implantable Cardioverter-Defibrillator Implantation After Myocardial Infarction: A Decision Analysis

<http://www3.interscience.wiley.com/journal/123270264/abstract?CRETRY=1&SRETRY=0>

Accelerating Innovation In Information And Communication Technology For Health

<http://content.healthaffairs.org/cgi/content/abstract/29/2/278>

GE Healthcare Launches Innovative eHealth and Health Information Exchange Portfolio in Europe

<http://www.ehealthnews.eu/ge/1903-ge-healthcare-launches-innovative-ehealth-and-health-information-exchange-portfolio-in-europe>

Rationale and design of a randomised controlled trial evaluating the effectiveness of an exercise program to improve the quality of life of patients with heart failure in primary care: the EFICAR study protocol

<http://www.biomedcentral.com/1471-2458/10/33>

Adding value to figures: a web-based European public health information system
<http://jtt.rsmjournals.com/cgi/content/abstract/16/1/35>

Heart failure patients with a lower educational level and better cognitive status benefit most from a self-management group programme
<http://www.pec-journal.com/article/PIIS0738399110000108/abstract?rss=yes>

Evaluation and Treatment of Severe Asymptomatic Hypertension
<http://www.aafp.org/afp/2010/0215/p470.html>

Evaluation of a web-based lifestyle coach designed to maintain a healthy bodyweight
<http://jtt.rsmjournals.com/cgi/content/abstract/16/1/3>

User acceptance of an Internet training aid for migraine self-management
<http://jtt.rsmjournals.com/cgi/content/abstract/16/1/20>

Patient use and compliance with medical advice delivered by a web-based triage system in primary care
<http://jtt.rsmjournals.com/cgi/content/abstract/16/1/3>

Telemedicine used to handle H1N1 in Alberta
<http://www.canhealth.com/News1295.html>

A Smart-Phone Application and a Companion Website for the Improvement of the Communication Skills of Children with Autism: Clinical Rationale, Technical Development and Preliminary Results
<http://www.springerlink.com/content/5q574hl40p71234n/>

Telehealth and Telenursing Are Live: APN Policy and Practice Implications
<http://www.npjournals.org/article/PIIS1555415509006588/abstract?rss=yes>

Benefits and Challenges of Electronic Surveillance in Nursing Home Research
<http://www.geronuseresearch.com/view.asp?rID=42331>

Telephone intervention promoting weight-related health behaviors
[http://www.sciencedirect.com/science?_ob=ArticleURL&_udi=B6WPG-4XY4JWD-5&_user=10&_coverDate=03%2F31%2F2010&_rdoc=5&_fmt=high&_orig=browse&_srch=doc-info\(%23toc%236990%232010%23999499996%231688107%23FLA%23display%23Volume\)&_cdi=6990&_sort=d&_docanchor=&_ct=14&_acct=C000050221&_version=1&_urlVersion=0&_userid=10&md5=c0951fdd039cbaf8e27e248225178a76](http://www.sciencedirect.com/science?_ob=ArticleURL&_udi=B6WPG-4XY4JWD-5&_user=10&_coverDate=03%2F31%2F2010&_rdoc=5&_fmt=high&_orig=browse&_srch=doc-info(%23toc%236990%232010%23999499996%231688107%23FLA%23display%23Volume)&_cdi=6990&_sort=d&_docanchor=&_ct=14&_acct=C000050221&_version=1&_urlVersion=0&_userid=10&md5=c0951fdd039cbaf8e27e248225178a76)

'Mobile' Health Needs And Opportunities In Developing Countries
<http://content.healthaffairs.org/cgi/content/abstract/29/2/252>

Patient-initiated online support groups: motives for initiation, extent of success and success factors
<http://jtt.rsmjournals.com/cgi/content/abstract/16/1/30>

Design and implementation of a secure and user-friendly broker platform supporting the end-to-end provisioning of e-homecare services
<http://jtt.rsmjournals.com/cgi/content/abstract/16/1/42>

A Telestroke Network Enhances Recruitment into Acute Stroke Clinical Trials
<http://stroke.ahajournals.org/cgi/content/abstract/STROKEAHA.109.566844v1>

A daily SMS reminder increases adherence to asthma treatment: A three-month follow-up study
<http://www.resmedjournal.com/article/PIIS0954611109003242/abstract?rss=yes>

Telehealth as adjunctive therapy in insulin pump treated patients: a pilot study
<http://www3.interscience.wiley.com/journal/123269773/abstract?CRETRY=1&SRETRY=0>

A Telemedicine system based on Internet and short message service as a new approach in the follow-up of patients with gestational diabetes
[http://www.sciencedirect.com/science?_ob=ArticleURL&_udi=B6T5Y-4Y23JKJ-2&_user=10&_coverDate=02%2F28%2F2010&_rdoc=27&_fmt=high&_orig=browse&_srch=doc-info\(%23toc%235015%232010%23999129997%231621092%23FLA%23display%23Volume\)&_cdi=5015&_sort=d&_docanchor=&_ct=27&_acct=C000050221&_version=1&_urlVersion=0&_userid=10&md5=6b88815e30d0a988b96112ba67ef245e](http://www.sciencedirect.com/science?_ob=ArticleURL&_udi=B6T5Y-4Y23JKJ-2&_user=10&_coverDate=02%2F28%2F2010&_rdoc=27&_fmt=high&_orig=browse&_srch=doc-info(%23toc%235015%232010%23999129997%231621092%23FLA%23display%23Volume)&_cdi=5015&_sort=d&_docanchor=&_ct=27&_acct=C000050221&_version=1&_urlVersion=0&_userid=10&md5=6b88815e30d0a988b96112ba67ef245e)

Nurse tele-consultations with discharged COPD patients reduce early readmissions – an interventional study
<http://www3.interscience.wiley.com/journal/123275116/abstract?CRETRY=1&SRETRY=0>

Effects of an Internet Physical Activity Intervention in Adults With Metabolic Syndrome
<http://wjm.sagepub.com/cgi/content/abstract/32/1/5>

Hospital Cost of Care, Quality of Care, and Readmission Rates (USA)
<http://archinte.ama-assn.org/cgi/content/abstract/170/4/340>

The interface between residential aged care and the emergency department: a systematic review
<http://ageing.oxfordjournals.org/cgi/content/abstract/afq008>

Overweight middle-aged adults at greater risk for cognitive decline in later life
http://www.eurekalert.org/pub_releases/2010-02/tqso-oma022310.php

Self-Control Impaired in Type 2 Diabetics, Research Suggests
<http://www.sciencedaily.com/releases/2010/02/100210194404.htm>

Chronic Conditions Account For Rise In Medicare Spending From 1987 To 2006
<http://content.healthaffairs.org/cgi/content/full/hlthaff.2009.0474v1>

Hospital Stays Raise Dementia Risk - Older People Who Have Been Hospitalized More Likely to Have Dementia, Mental Decline
<http://www.webmd.com/healthy-aging/news/20100223/hospital-stays-raise-dementia-risk>

The FARE: A new way to express Falls Risk among older persons including physical activity as a measure of Exposure
[http://www.sciencedirect.com/science?_ob=ArticleURL&_udi=B6WPG-4Y35TFD-1&_user=10&_coverDate=03%2F31%2F2010&_rdoc=11&_fmt=high&_orig=browse&_srch=doc-info\(%23toc%236990%232010%23999499996%231688107%23FLA%23display%23Volume\)&_cdi=6990&_sort=d&_docanchor=&_ct=14&_acct=C000050221&_version=1&_urlVersion=0&_userid=10&md5=62abb9db2218533a4767fd2893095571](http://www.sciencedirect.com/science?_ob=ArticleURL&_udi=B6WPG-4Y35TFD-1&_user=10&_coverDate=03%2F31%2F2010&_rdoc=11&_fmt=high&_orig=browse&_srch=doc-info(%23toc%236990%232010%23999499996%231688107%23FLA%23display%23Volume)&_cdi=6990&_sort=d&_docanchor=&_ct=14&_acct=C000050221&_version=1&_urlVersion=0&_userid=10&md5=62abb9db2218533a4767fd2893095571)

Nurse tele-consultations with discharged COPD patients reduce early readmissions – an interventional study

<http://www3.interscience.wiley.com/journal/123275116/abstract?CRETRY=1&SRETRY=0>

Home telemonitoring for congestive heart failure: a systematic review and meta-analysis

<http://jtt.rsmjournals.com/cgi/content/short/16/2/68?rss=1>

Aware and smart environments: The Casattenta project

http://www.sciencedirect.com/science?_ob=ArticleURL&_udi=B6V44-4YB685R-3&_user=10&_coverDate=02%2F06%2F2010&_rdoc=1&_fmt=high&_orig=search&_sort=d&_docanchor=&view=c&_acct=C000050221&_version=1&_urlVersion=0&_userid=10&md5=59919d98052e1dac5f363e552701426a

WSDAN News Service – recent journal articles

<http://www.wsdactionnetwork.org.uk/news/index.html>

A summary of journal articles from 2009 is now available at:

<http://hubola.kingsfund.org.uk/document.rm?id=8398>

[Register](#) now for regular WSDAN updates.

9 Events

Events listing: <http://www.dhcarenetworks.org.uk/events/s/>

Forthcoming Event List (DH Care Networks)

Date	Event Title	Network	Places Remaining	Book
02/03/10 to 03/03/10	Managing New Realities 2010	Housing	-	N/A
10/03/10	National Learning Set - Common Resource Allocation Framework	Personalisation	25 of 40	Book now
10/03/10 to 31/03/10	End of life strategy – the role of Housing Support	Housing	-	N/A
11/03/10	East Midlands Regional Housing LIN Meeting	Housing	14 of 35	Book now
11/03/10	JSNA and Homlessness event	Housing	-	N/A
16/03/10 to 17/03/10	CAF -Clinical Safety Approach	Common Assessment Framework for Adults Network	14 of 27	Book now
18/03/10	London & South East Regional	Housing	2 of 28	Book

	Housing LIN Meeting			now
25/03/10	Living well in the South East – planning homes and services for our lifetime	Housing	-	N/A
25/03/10	Regional Transformation Leads meeting	Personalisation	25 of 30	Book now
26/03/10	Recovery, Enablement and Reablement - the present and the future	Personalisation	49 of 54	Book now
31/03/10	North East, Yorkshire & Humberside Regional Housing LIN AGM	Housing	30 of 30	Book now
28/04/10	Housing Choice for Older People: Creating a Policy Framework	Housing	-	N/A

Diary for telecare and telehealth events and conferences

March

[HIMSS10](#) : Mar 01 - 04, 2010 Atlanta, GA <http://www.himssconference.org/>

Telemedicine and Legal Aspects – Belgium (2 March 2010)
<http://www.epractice.eu/workshops/telemedicine>

Telecare workability: a sociotechnical perspective 2 March 2010 – Maggie Mort at Imperial College
http://www3.imperial.ac.uk/newsandeventspggrp/imperialcollege/businessschool/events_summary/event_1-2-2010-11-20-23?eventid=82701

CeBIT TeleHealth March 2 - 6, 2010 - Hannover, Germany www.cebit.de/telehealth_e.

National Digital Inclusion Conference: 10-11 March 2010, London, UK
<https://www.eventsforce.net/civic/frontend/reg/thome.csp?pageID=6475&eventID=27>

WOHIT Conference and Expo : Mar 15 - 18, 2010 Barcelona, Spain <http://www.worldofhealthit.org/>

Enabling Integrated Care: Harnessing personal health systems for better outcomes across the care continuum Barcelona 18 March 2010 <http://sph.continuaalliance.org/eventsBarcelona.html>

April

Health 2.0 Europe, Paris 6-7 April 2010 <http://www.ehealthnews.eu/events/1925-final-agenda-and-sponsorship-deadline-for-health-20-europe>

Med-e-tel (14-16 April 2010) – Luxembourg <http://www.medetel.lu/index.php> (Tim Ellis will be speaking)

Managing Long Term Conditions: 15/16 April 2010, Harrogate)
<http://www.managinglongtermconditions.com/> (Mike Clark will be speaking)

May

ATA 2010: 15th Annual International Meeting & Exposition May 16 - 18, 2010 - San Antonio
<http://www.americantelemed.org/i4a/pages/index.cfm?pageID=3696>

eHealth: Transforming Health and Social Care Services Through Technology 27 May 2010
<http://www.insidegovernment.co.uk/health/health-technology/>

Telecare Advisory Network – 27 May 2010, Wellington House, London

June

NHS Confederation Annual Conference – 23-25 June 2010
<http://www.nhsconfed.org/Events/2010/Pages/2010.aspx>

WSDAN event in North East – Date to be confirmed

Global Telehealth 2010 (GT2010) – 10-12 November 2010, Perth, WA
<http://www.ehealthserver.com/conferences-and-events/429-call-for-papers-global-telehealth-2010-gt2010>

WSDAN Events

An event is planned for June 2010 in the North East – date to be confirmed in March 2010

The Foundation for Assistive Technology (FAST) provides a full listing of forthcoming telecare events – see <http://www.fastuk.org/services/events.php?pg=2>. Suppliers also run telecare and telehealth events – check their web sites regularly for dates.

All previous telecare eNewsletters are available at: www.dhcarenetworks.org.uk/telecarenewsletters

Glossary:

ALIP – Assisted Living Innovation Platform
AT – Assistive Technology
CQC – Care Quality Commission
DCLG – Department for Communities and Local Government
i4i – Invention for Innovation
LIN – Learning and Improvement Network
POPP – Partnership for Older Peoples Projects
PT Grant or PTG – Preventative Technology Grant
SCIE – Social Care Institute for Excellence
TSA – Telecare Services Association
TSB – Technology Strategy Board
WSDAN – Whole System Demonstrator Action Network